

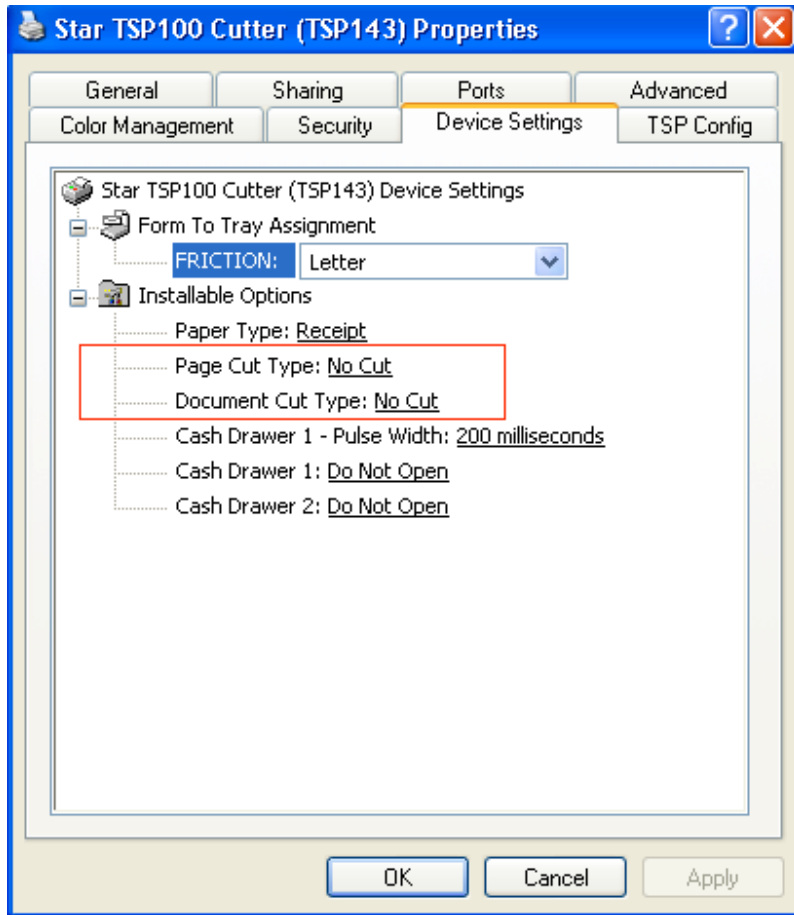
Created November 2008

This application note shows how to use the Star TSP100 with Cash Register Express POS Software.

*Note: This application note is for CRE users with versions earlier than 11.6008

First install the TSP100 CD Software.

The TSP100 will print correctly, but the auto cutter will fire twice. In this case, the cutter must be disabled in the TSP100 driver. Click the Windows Start button, navigate to Settings and then Control Panel. Double click Printers and Fixes. Right click on the printer named “Star TSP100 Cutter (TSP143)” and select Properties. Navigate to Device Settings tab of the and set both Page Cut Type and Document Cut type to No Cut.



Using Printer with CRE/RPE

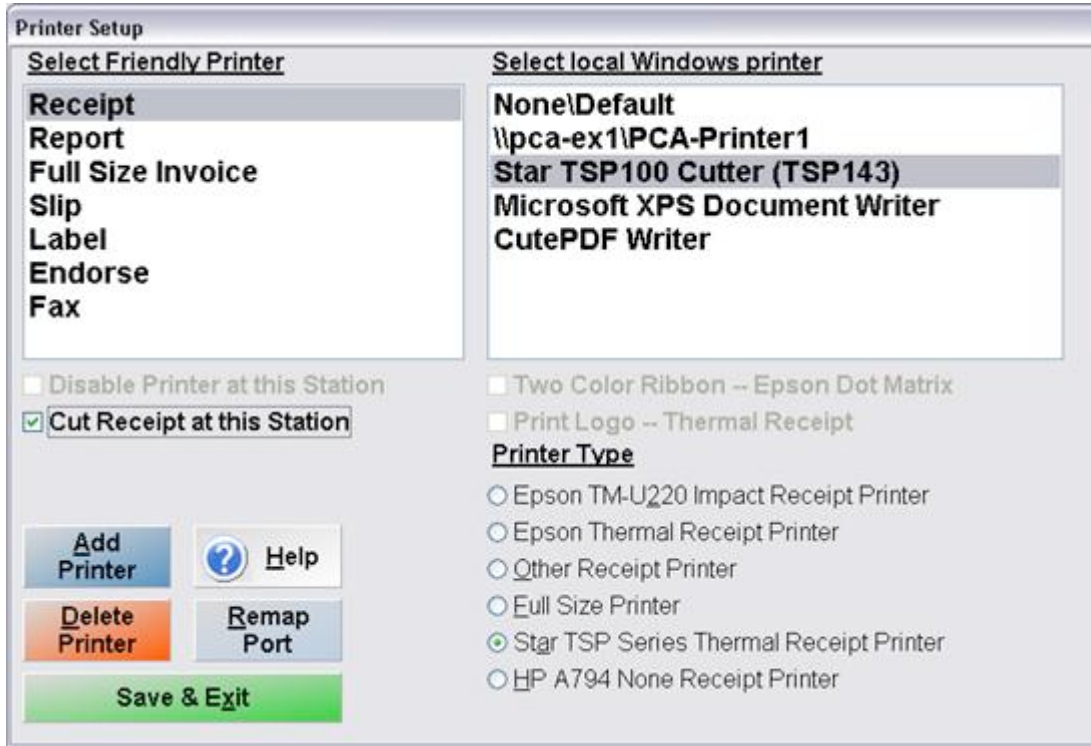
Within CRE/RPE go to Manager/Options > Setup > Friendly Printer Setup

Highlight “Receipt” from the options on the left (Select Friendly Printer)

Highlight the appropriate Star printer from the top right (Select local Windows printer)

Under “Printer Type” select Star TSP Thermal Receipt Printer

Finally select “Cut Receipt at this Station” and then “Save & Exit” to commit changes



Run a test transaction through CRE/RPE to make sure the printer is printing receipts correctly

Congratulations! You have now successfully installed and configured your Star TSP series printer!