

This application note shows how to use the Star TSP100 with Cash Register Express POS Software.

*Note: Version 11.6008 and higher of CRE officially supports the TSP100

First install the TSP100 CD Software.

Using Printer with CRE/RPE

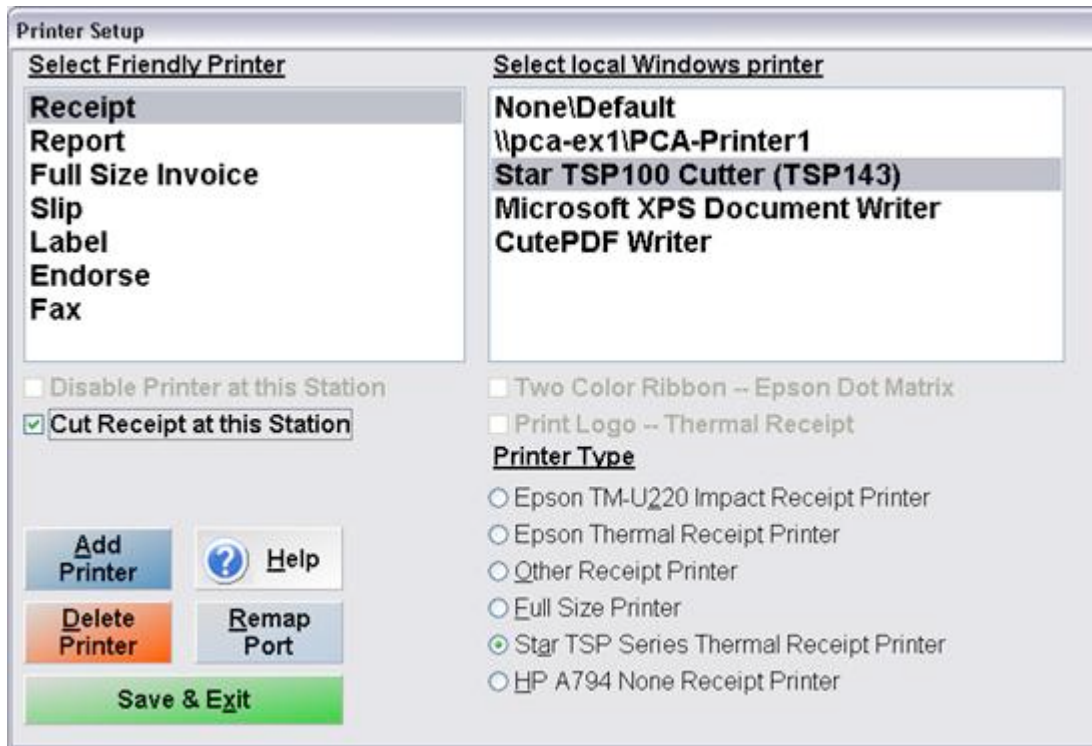
Within CRE/RPE go to Manager/Options > Setup > Friendly Printer Setup

Highlight “Receipt” from the options on the left (Select Friendly Printer)

Highlight the appropriate Star printer from the top right (Select local Windows printer)

Under “Printer Type” select Star TSP Thermal Receipt Printer

Finally select “Cut Receipt at this Station” and then “Save & Exit” to commit changes



Run a test transaction through CRE/RPE to make sure the printer is printing receipts correctly

Congratulations! You have now successfully installed and configured your Star TSP series printer!