

Created March 2009

This application note shows how to set up Star Micronics printers for guest check and kitchen ticket printing from Aldelo Restaurant Software. While this application note was written using the TSP100 for guest checks and SP700 for kitchen tickets, these directions suffice for any Star Micronics printer model.

Recommended Guest Check/Bar Printers: TSP100U, TSP650, or TSP700II

Recommended Kitchen Ticket Printers: TSP100LAN, SP700

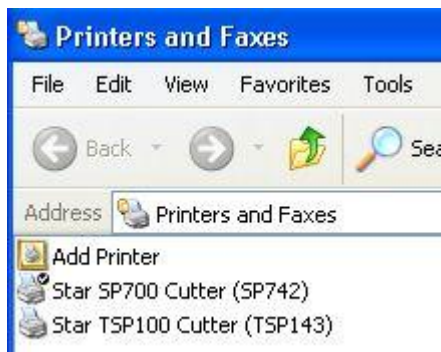
Recommended Label Printer: TSP828

Supported Interfaces: Ethernet, USB, Serial, Parallel

Recommended Restaurant Printer Options: Splash Proof Cover, Vertical Stand, Kitchen Alarm

Aldelo Software (<http://www.aldelo.com/>)

## Aldelo Configuration

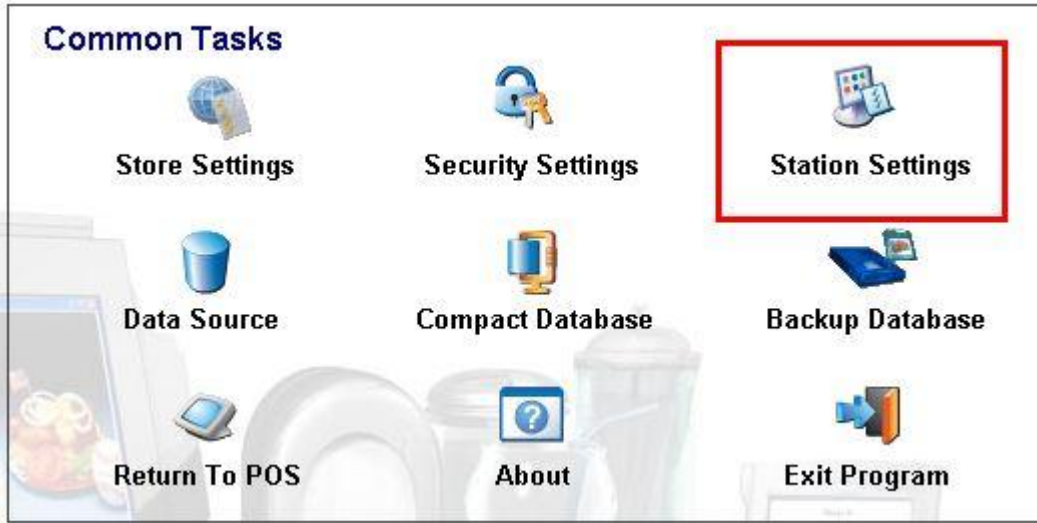


1. Ensure your printers are installed by clicking the Windows Start button and navigating Settings > Printers and Faxes. For instructions on installing Star Micronics printers, visit the FAQ section of <http://www.starmicronics.com/>

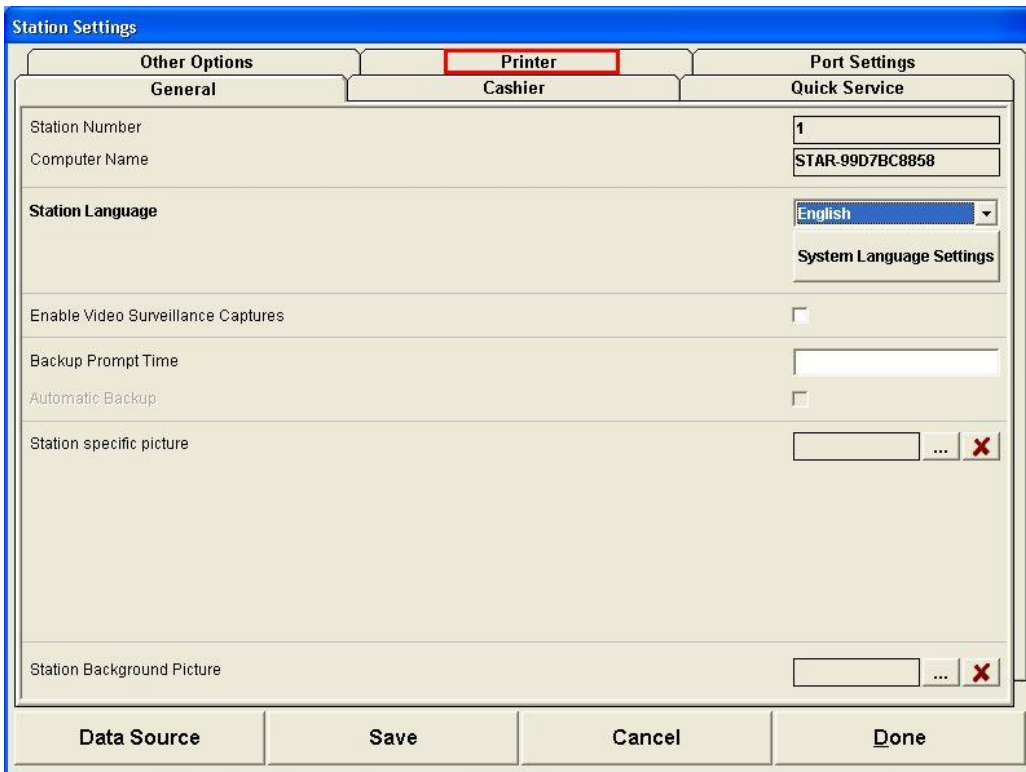
**Important:** If you are using an ethernet printer, a static IP address must be assigned. Visit the FAQ section and search "static IP" to download step-by-step instructions.

2. Click the Windows Start button and navigate Programs > Aldelo For Restaurants > Point of Sale > Aldelo For Restaurants POS

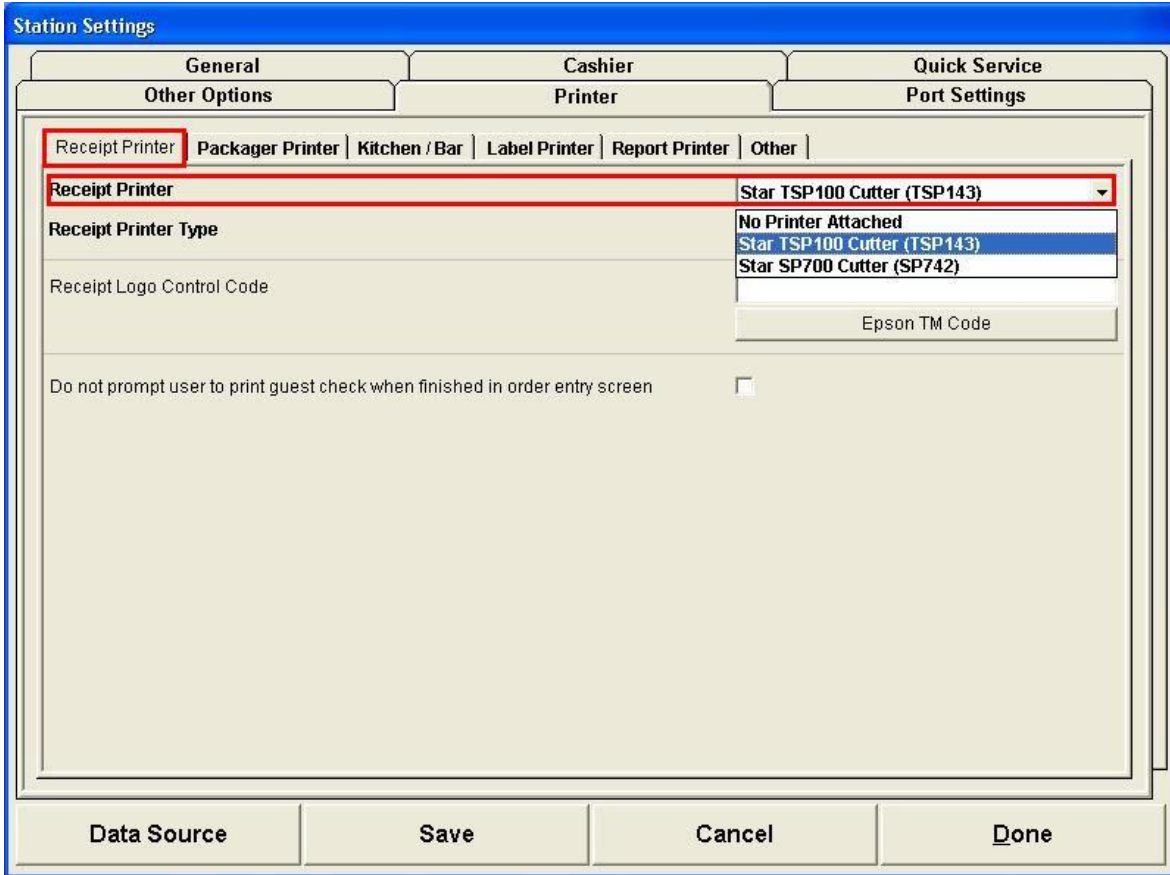
3. Log in to Aldelo and go to the Back Office.



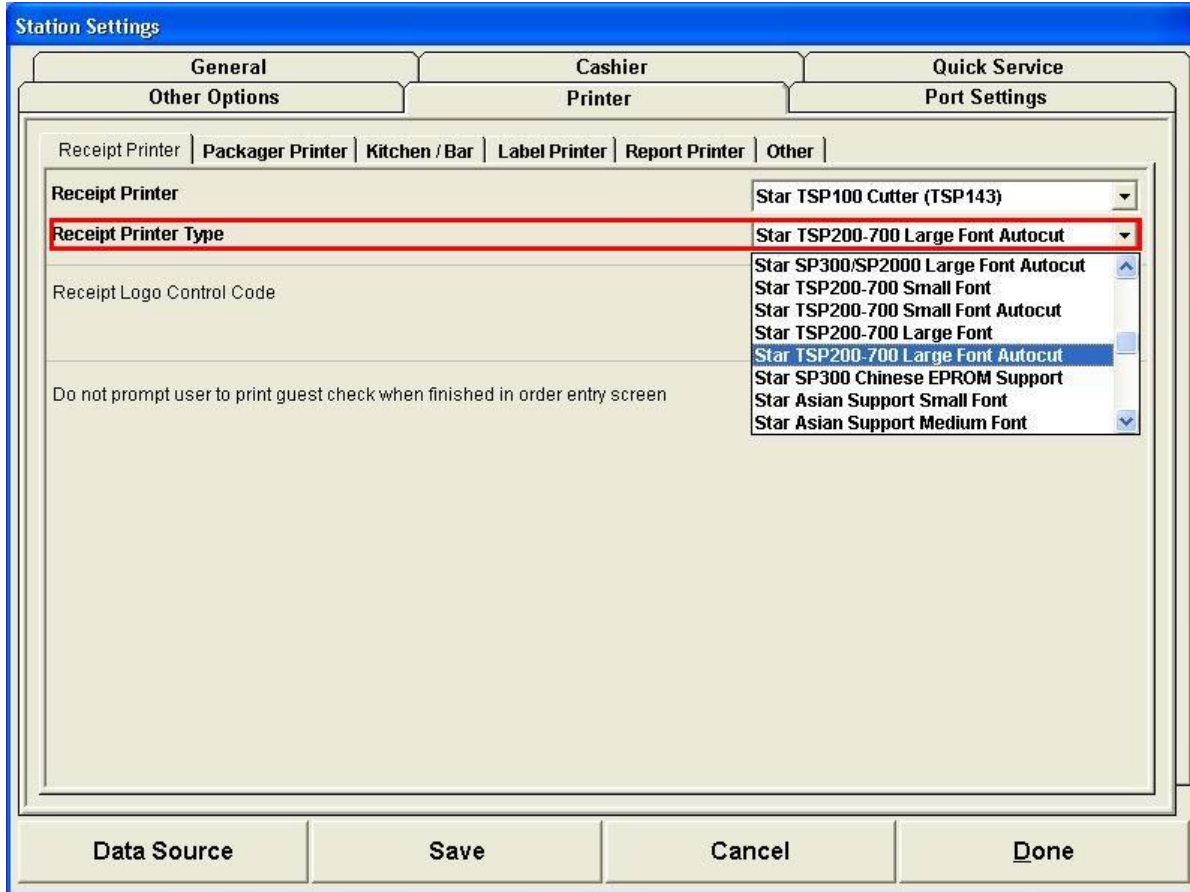
4. Click the “Station Settings” icon.



5. Click the “Printer” tab.



6. Click the “Receipt Printer” tab. In the drop down box next to “Receipt Printer”, select your desired printer to output guest checks.



7. The drop down box next to “Receipt Printer Type” offers different options for font size and auto cutting. For Star Micronics thermal printers, select “Star TSP200-700” and choose the appropriate option:

Star TSP200-700 Small Font: Prints in small sized font; no cut (Tear bar models only)

Star TSP200-700 Small Font Autocut: Prints in small size font; fires the auto cutter (Auto cutter models only)

Star TSP200-700 Large Font: Prints in large sized font; no cut (Tear bar models only)

Star TSP200-700 Large Font Autocut: Prints in large sized font; fires the auto cutter (Auto cutter models only)

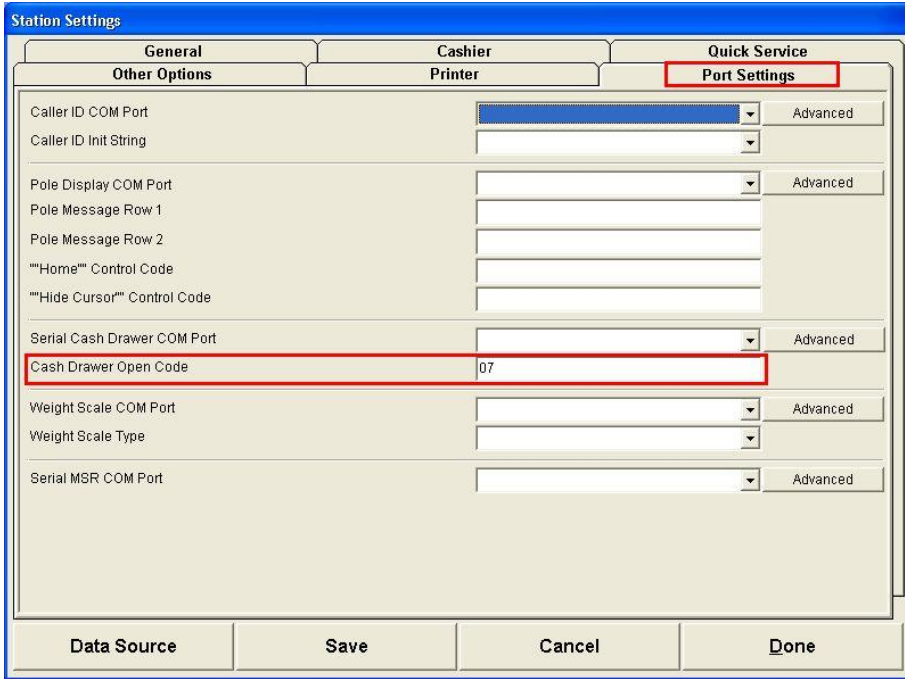
For Star Micronics impact dot matrix printers, select “Star SP300/SP2000” and choose the appropriate option:

Star SP300/SP2000 Small Font: Prints in small sized font; no cut (Tear bar models only)

Star SP300/SP2000 Small Font Autocut: Prints in small size font; fires the auto cutter (Auto cutter models only)

Star SP300/SP2000 Large Font: Prints in large sized font; no cut (Tear bar models only)

Star SP300/SP2000 Large Font Autocut: Prints in large sized font; fires the auto cutter (Auto cutter models only)



**Station Settings**

General | Cashier | Quick Service

Other Options | Printer | **Port Settings**

Caller ID COM Port [Dropdown] Advanced

Caller ID Init String [Dropdown]

Pole Display COM Port [Dropdown] Advanced

Pole Message Row 1 [Text Box]

Pole Message Row 2 [Text Box]

""Home"" Control Code [Text Box]

""Hide Cursor"" Control Code [Text Box]

Serial Cash Drawer COM Port [Dropdown] Advanced

**Cash Drawer Open Code** [Text Box] 07

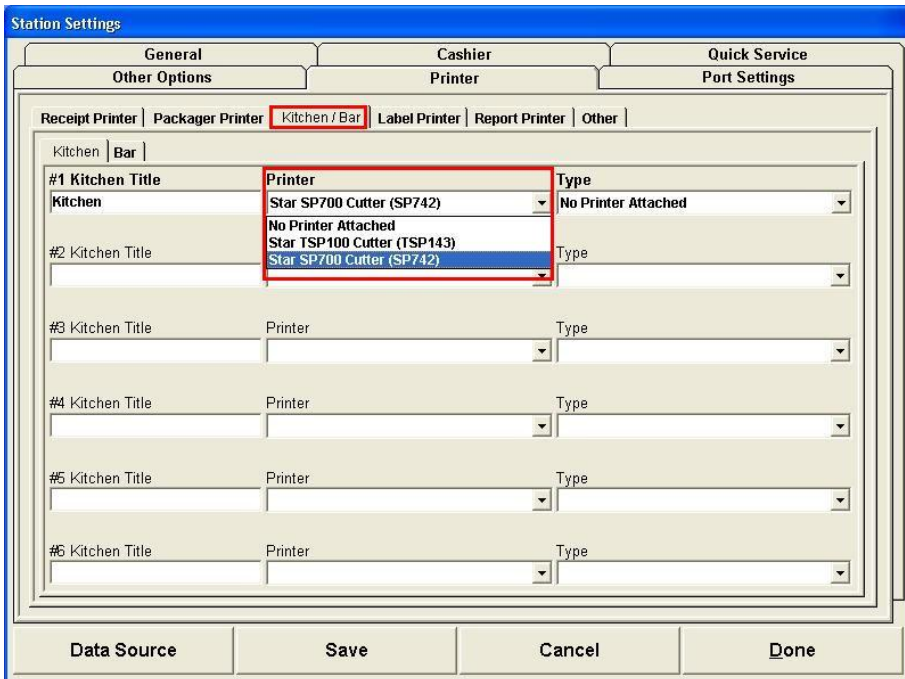
Weight Scale COM Port [Dropdown] Advanced

Weight Scale Type [Dropdown]

Serial MSR COM Port [Dropdown] Advanced

Data Source | Save | Cancel | Done

8. If a cash drawer is connected to the receipt printer, click on the “Port Settings” tab. Find the row labeled “Cash Drawer Open Code” and enter the number “07” in the text box.



**Station Settings**

General | Cashier | Quick Service

Other Options | Printer | **Port Settings**

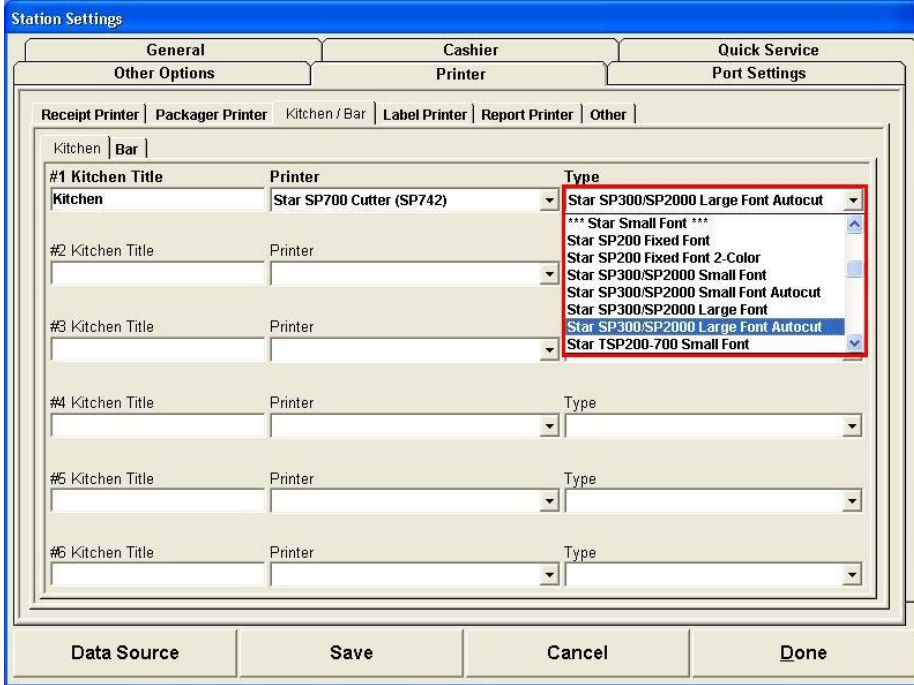
Receipt Printer | **Packager Printer** | **Kitchen / Bar** | Label Printer | Report Printer | Other

Kitchen | Bar

# Kitchen Title	Printer	Type
#1 Kitchen	Star SP700 Cutter (SP742)	No Printer Attached
#2 Kitchen Title	No Printer Attached	Type
	Star TSP100 Cutter (TSP143)	
	Star SP700 Cutter (SP742)	
#3 Kitchen Title	Printer	Type
#4 Kitchen Title	Printer	Type
#5 Kitchen Title	Printer	Type
#6 Kitchen Title	Printer	Type

Data Source | Save | Cancel | Done

9. Click the “Kitchen/Bar” tab. In the first row, click the drop down box in the middle column labeled “Printer”. Select your desired printer to output kitchen tickets.



10. Click the drop down box in the third column labeled "Type". Select the appropriate option. Refer to the above descriptions for the details of each option.

11. Click the "Save" button in the bottom menu bar. Then, click the "Done" button.

Congratulations! You have successfully set up Star Micronics guest check and kitchen printers in Aldelo.