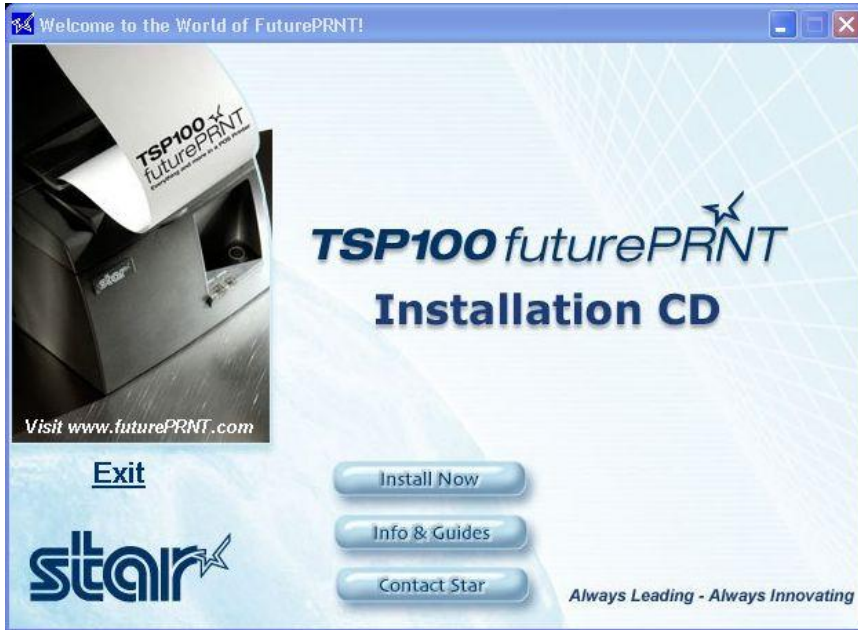


Created January 2008

This application note shows how to install the TSP100U and TSP100USB in a Windows™ environment.

## Installing the TSP100 USB Driver

1. Turn the power off to the printer. Insert the TSP100 Installation CD that was packaged in the same box as the printer into the CDROM drive. If no CDROM drive is available, the contents of the CD can be obtained from the Star Micronics website by visiting the support section of <http://www.starmicronics.com>.



2. Click the “Install Now” button.



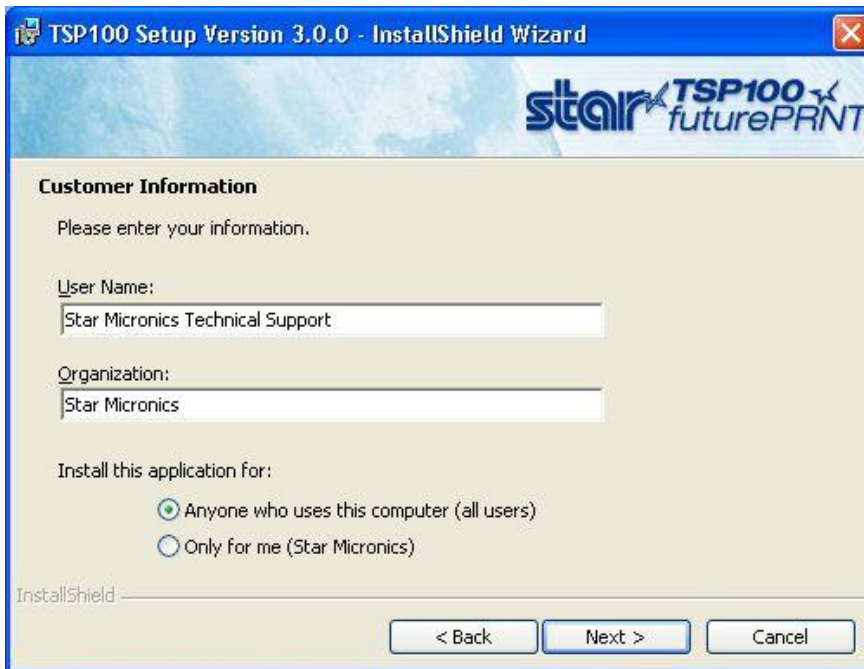
3. Click "I Accept".



4. Click the "Win 2K, XP, Vista" button.



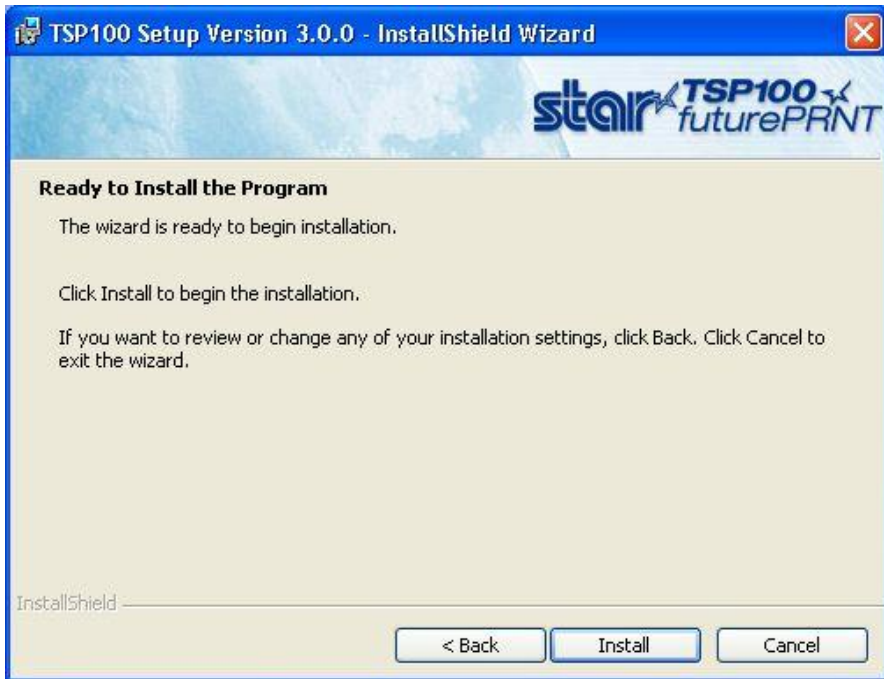
5. Click “Next”.



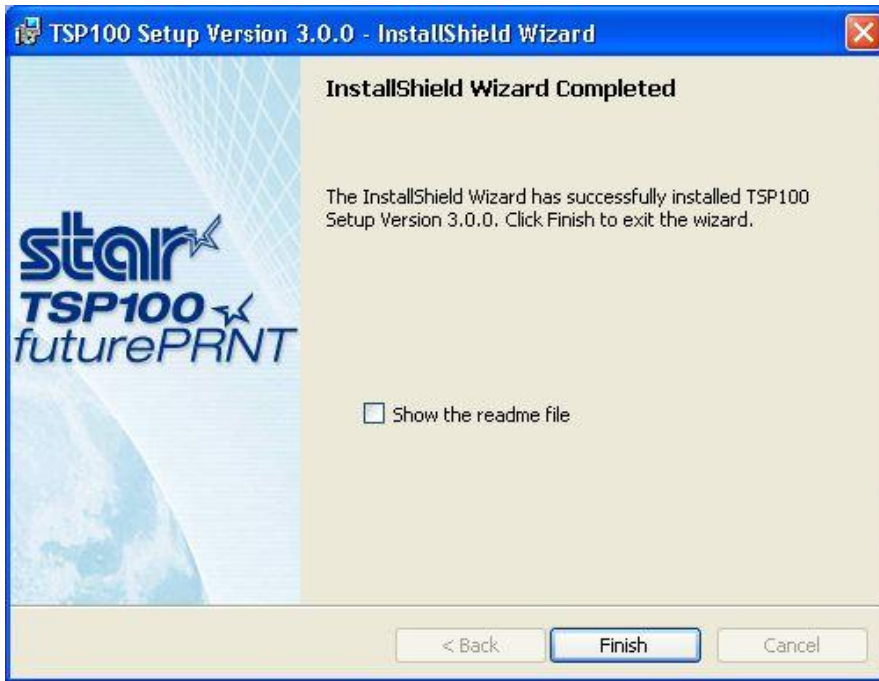
6. Enter the User Name and Organization and click “Next”.



7. Select “Typical” setup type and click “Next”.



8. Click “Install”.



9. Click "Finish".

10. Exit out of the TSP100 Setup Installer.

The printer driver will self-install. A bubble will pop up in the lower right corner of the desktop confirming the TSP100 has been successfully installed.

Congratulations! The TSP100 will now appear in the Printers and Faxes folder and is ready for print jobs.