

# Manually Assigning an IP Address to a Star Ethernet Printer (Windows)

## Introduction

This application note explains how to manually assign an IP Address to a Star Printer on a network without DHCP enabled.

Please note if the network does have DHCP enabled, Star provides a convenient Configuration Utility on the Installation CD which allows the system administrator to change ethernet card settings without the use of the Command Prompt. It is recommended to use the Configuration Utility when possible for maximum convenience. Printer software is available for free download at the [Star Micronics Global Support Site](#).

Supported Printers: TSP100LAN, TSP650, FVP10, TSP700II, TSP800II, TSP1000, HSP7000, SP700, SP500, TUP500

Supported Interfaces: Ethernet, Wireless LAN

Supported Environments: Windows 7 / Vista / XP / 2000

### Table of Contents

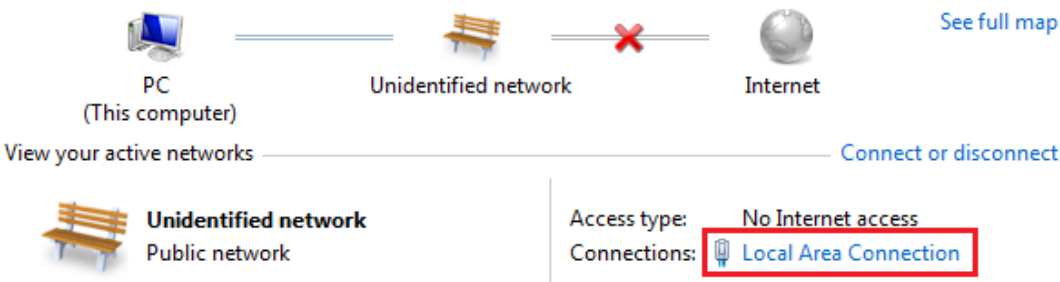
- I. [Assigning an IP Address to the PC](#) ..... Page 1
- II. [Assigning a Temporary IP Address to the Printer](#) ..... Page 3
- III. [Assigning a Static IP Address to the Printer](#)..... Page 5
- IV. [Setting Up the TCP/IP Port for the Printer Driver](#) ..... Page 8

## I. Assigning an IP Address to the PC

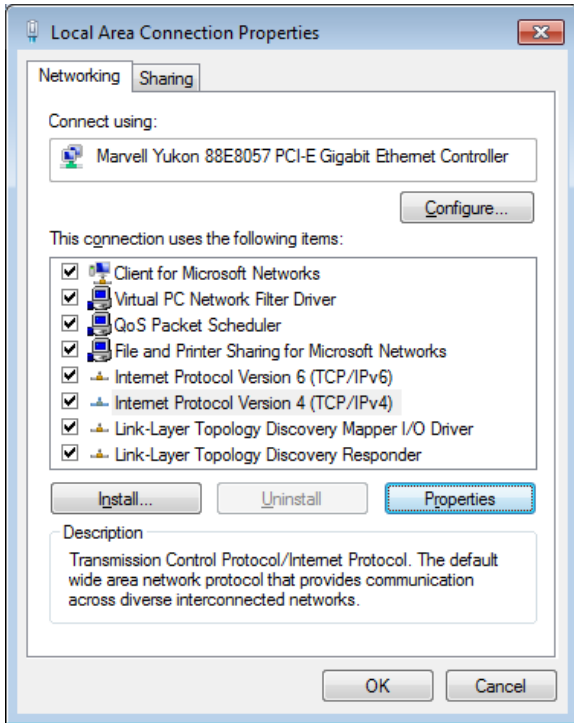
If the PC does not have an internet connection and therefore does not have an IP address assigned by a server, an IP address must be force-assigned for the PC.

1. Open My Network Places and view network connections.  
 Disable any Wifi connections and ensure the PC is connected to the Local Area Connection.

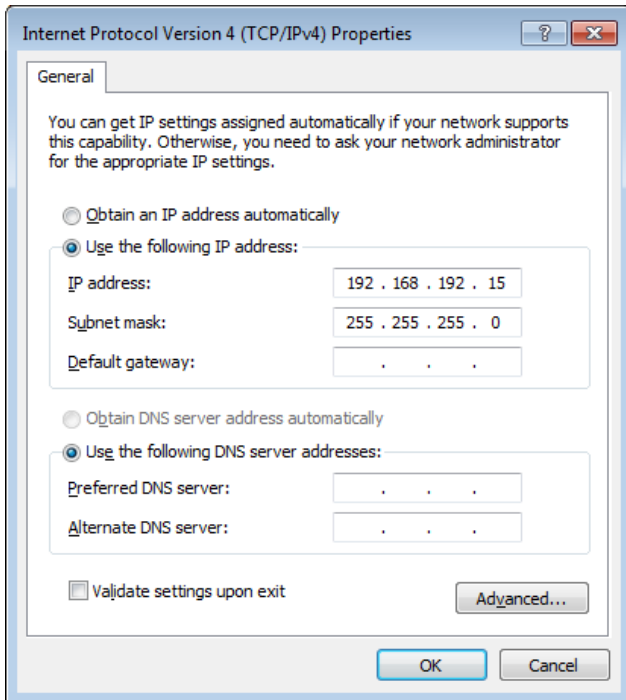
### View your basic network information and set up connections



2. Right-click on the Local Area Connection and click on properties.



3. Click on Internet Protocol (TCP/IP) and click Properties.

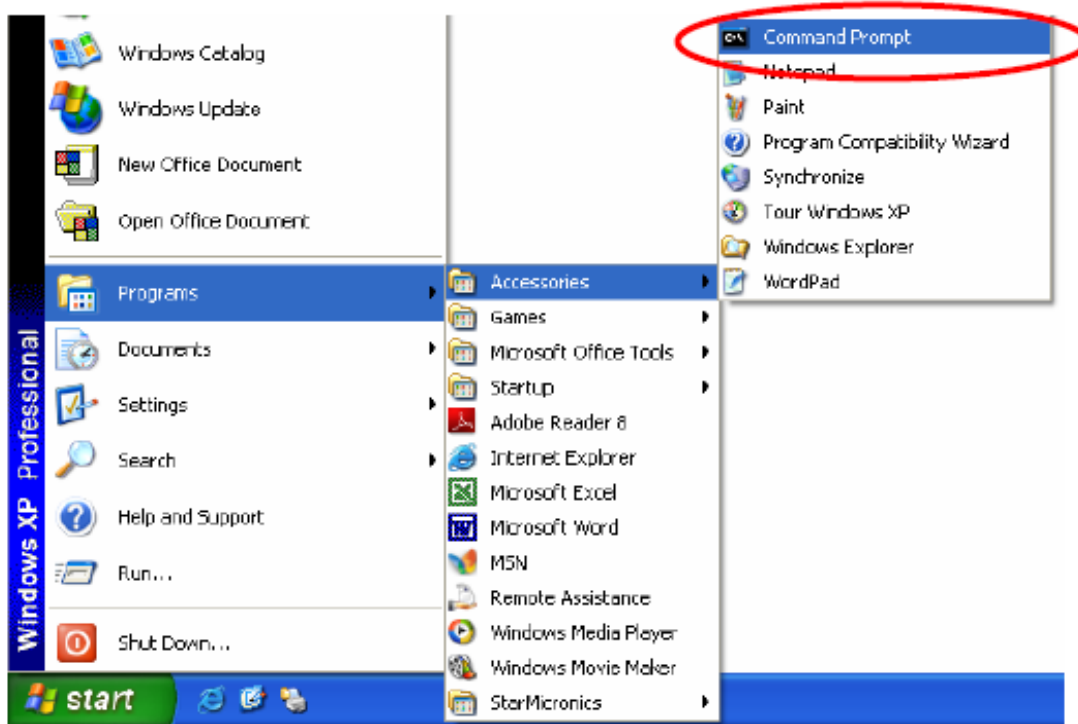


4. Click on “Use the following IP address” and enter the desired IP address for the PC. Set the Subnet Mask to 255.255.255.0 and then click OK.

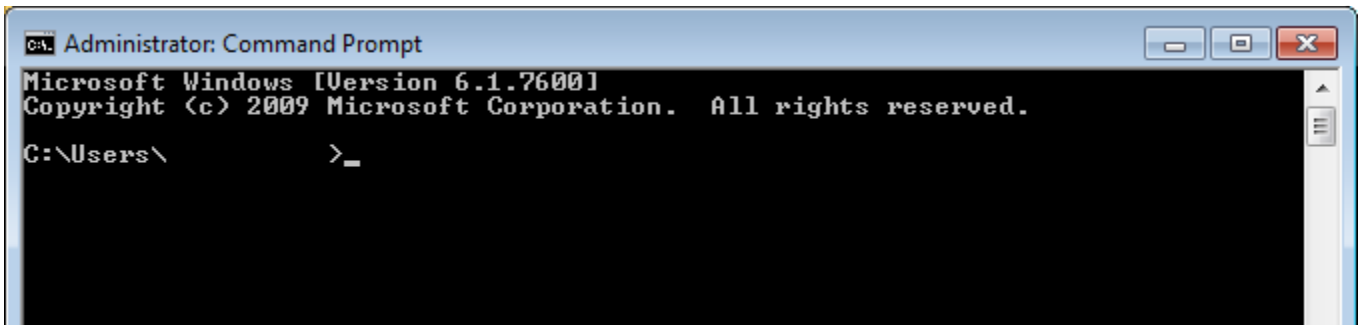
## II. Assigning a Temporary IP Address to the Printer

Use of a temporary address enables connection to a printer that does not yet have an IP address setting.

### On Windows XP:



1. At the Windows Start menu, select [All Programs] – [Accessories] – [Command Prompt].  
If using Windows 7 or Vista, right-click on [Command Prompt] and select [Run as administrator].



Use the following commands to set the temporary IP address for the printer.

1. **arp -d** *printer's\_temporary\_IP\_address*
  2. **arp -s** *printer's\_temporary\_IP\_address printer's\_MAC\_address*
  3. **ping** *printer's\_temporary\_IP\_address*
  4. **arp -d** *printer's\_temporary\_IP\_address*
2. At the command prompt, use the arp command to set a temporary IP address. The ethernet card's MAC address can be determined by printing a self test. To do this, turn the power to the printer off. Press and hold the feed button while the printer is powered back on. Let go of the feed button after three seconds or when printing begins.

*Example: To set a temporary IP address of 192.168.32.55*

```

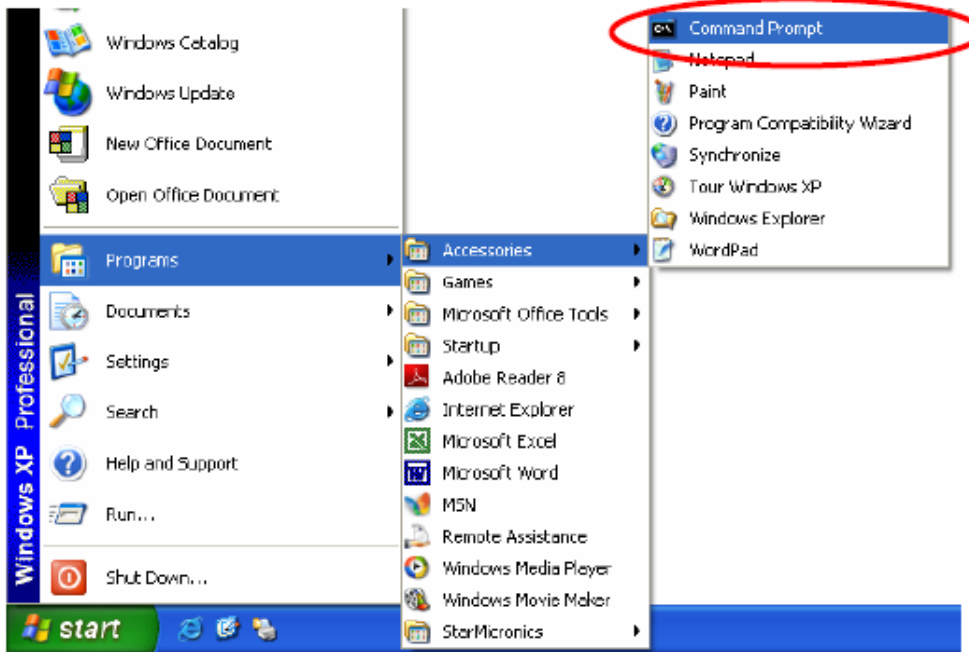
arp -d 192.168.32.55
arp -s 192.168.32.55 00-11-62-00-03-4D
ping 192.168.32.55
arp -d 192.168.32.55
  
```

Note: The temporary IP address set here will be cleared when the printer's power is switched off. Therefore, it is recommended to immediately proceed to setting a regular IP address for the printer.

### III. Assigning a Static IP Address to the Printer

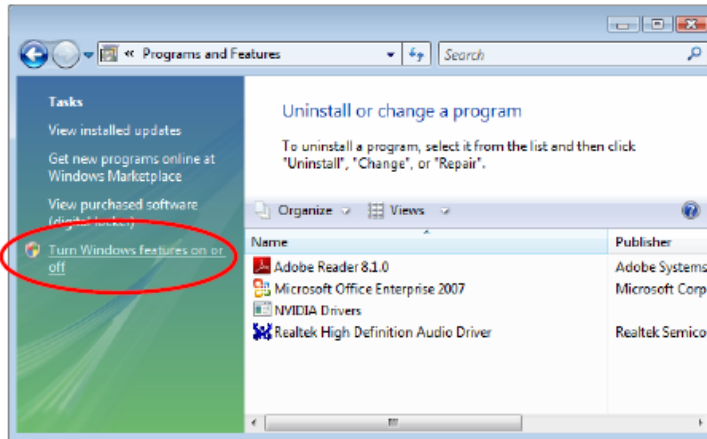
1. At the Windows Start menu, select [All Programs] – [Accessories] – [Command Prompt].  
If using Windows 7 or Vista, right-click on [Command Prompt] and select [Run as administrator].

**On Windows XP:**

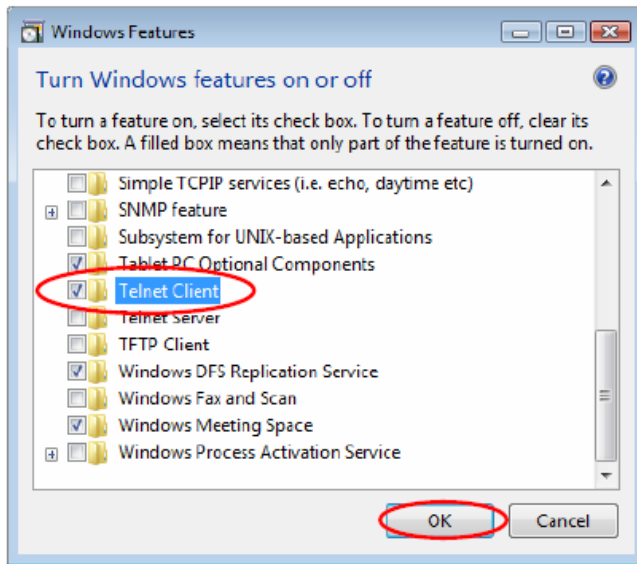


■ If using Windows Vista, begin with the following preliminary steps to ensure that Telnet is enabled.

1. From the [Start] menu, open the [Control Panel].
2. Select [Programs and Features].
3. Under [Tasks], select [Turn Windows features on or off].



4. When the User Account Control dialog appears, click [Continue].
5. If [Telnet Client] is not yet checked, place a check next to it. Then click [OK].



6. If you had to add the check in the previous step (if Telnet Client was not already checked to begin with), you must now restart your computer.

```

Administrator: Command Prompt
Microsoft Windows [Version 6.1.7600]
Copyright (c) 2009 Microsoft Corporation. All rights reserved.
C:\Users\ >telnet 192.168.32.55
  
```

Example: > telnet 192.168.32.55



IP address of the printer you wish to set.

```

Welcome to TSP100LAN TELNET Utility.
Copyright(C) 2008 Star Micronics co., Ltd.
<< Connected Device >>
Device Model : TSP143 <STR T-001>
MAC Address : 00:11:62:00:03:4D

login: root
password: *****_
  
```

```

Welcome to IFBD-HE05/06 TELNET Utility.
Copyright(C) 2005 Star Micronics co., Ltd.
<< Connected Device >>
Device Model: TSP800 <STR T-E001>
NIC Product : IFBD-HE05/06
MAC Address : 00:11:62:04:71:EC

login:
  
```

- Log into the printer as “root”.  
 The factory default setting for the password is “public” for TSP100LAN, IFBD-HE05/06, IFBD-HE07/08  
 There is no password for legacy ethernet interface cards IFBD-HE03/04, IFBD-HW03/04  
 (If the password has been changed, use the current password.)

```

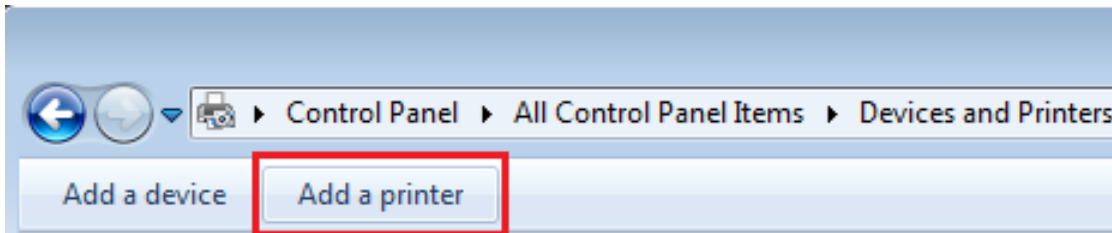
Hello root

=== Main Menu ===
 1> IP Parameters Configuration
 2> System Configuration
 3> Change Password
96> Display Status
97> Reset Settings to Defaults
98> Save & Restart
99> Quit

Enter Selection: _
    
```

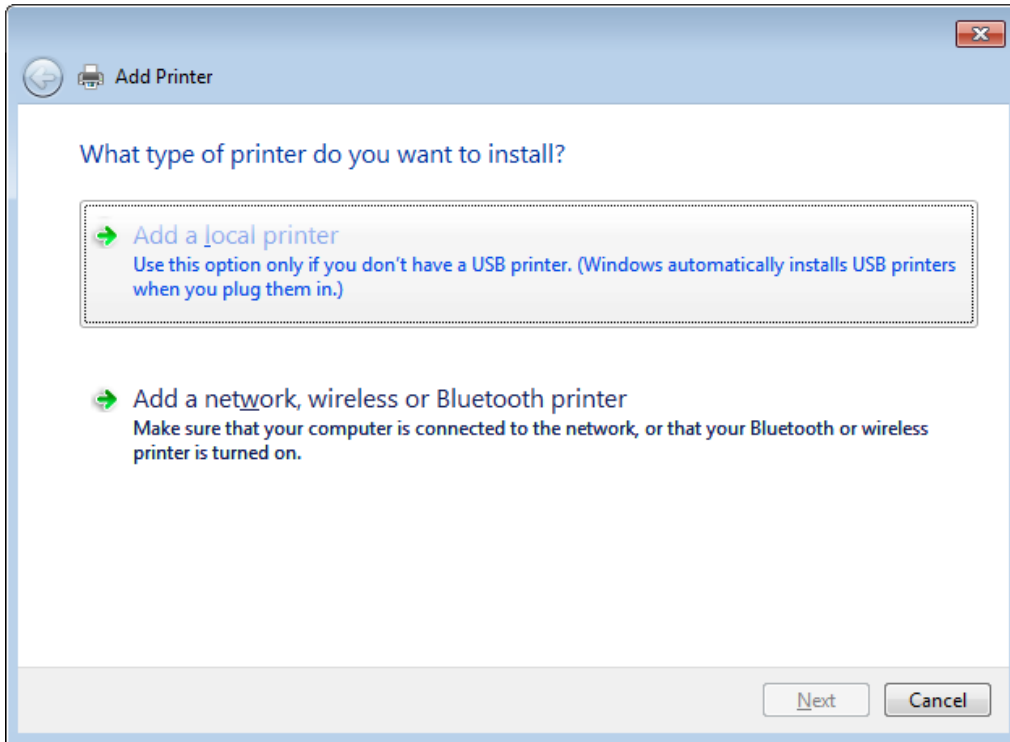
3. Type "1" after "Enter Selection". Then, type in the desired static IP address. After setting the static IP address, type "2" after "Enter Selection". Set the Subnet Mask to "255.255.255.0".
4. When all desired settings are made, select 98 (Save and Restart) and then select either 1 (Save & Restart device and Configuration printing) or 2 (Save & Restart Device).

#### IV. Setting Up the TCP/IP Port for the Printer Driver

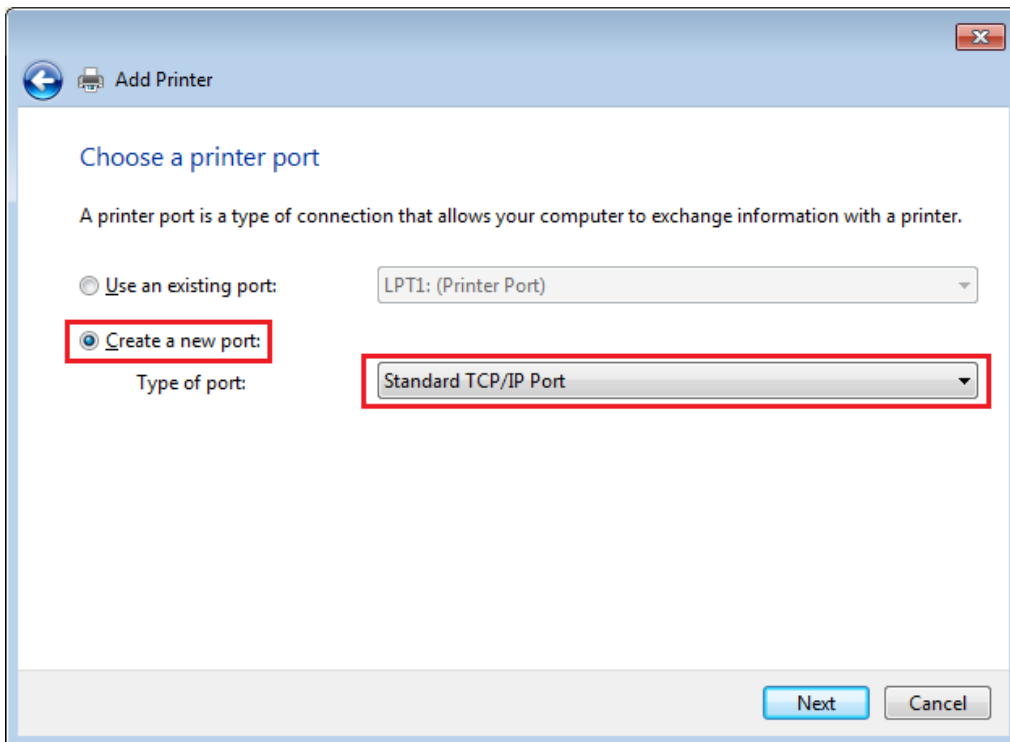


1. Open the Devices and Printers folder (Printers&Faxes on XP) and click "Add a printer"  
 7 / Vista: Start Menu / Control Panel / Devices and Printers  
 XP: Start Menu / Control Panel / Printers & Faxes

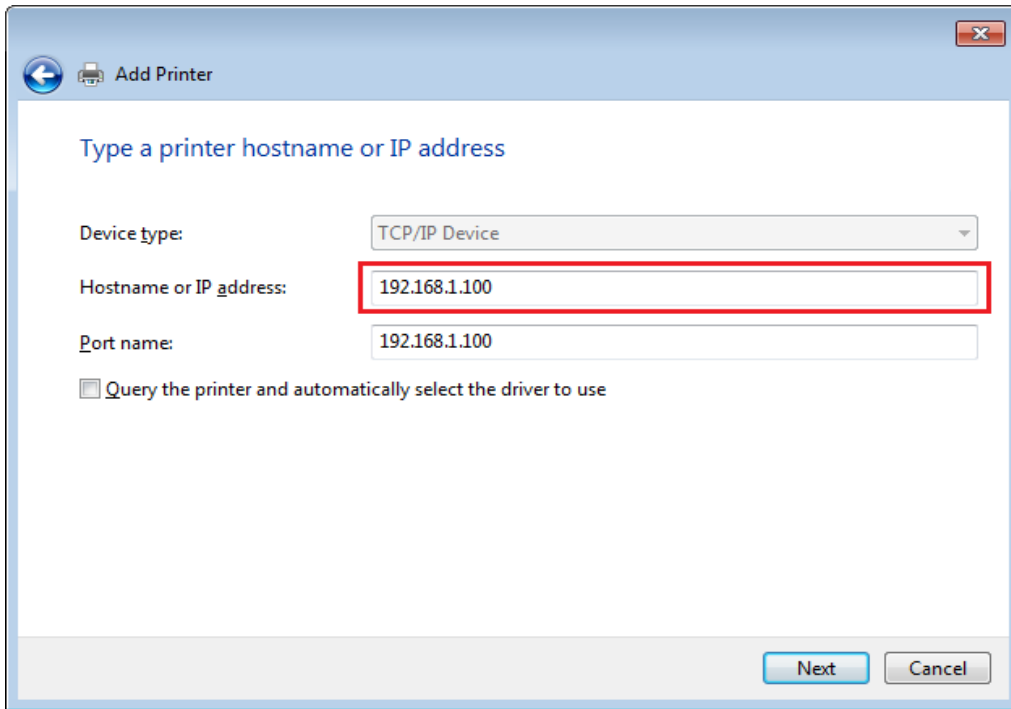




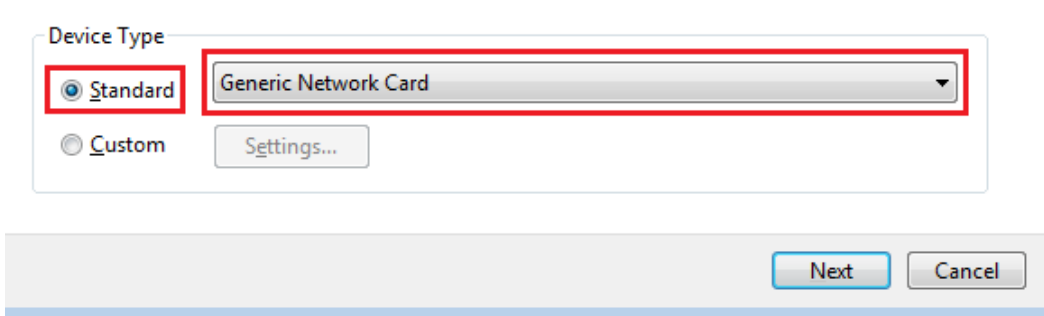
2. Click Add a local printer click Next.



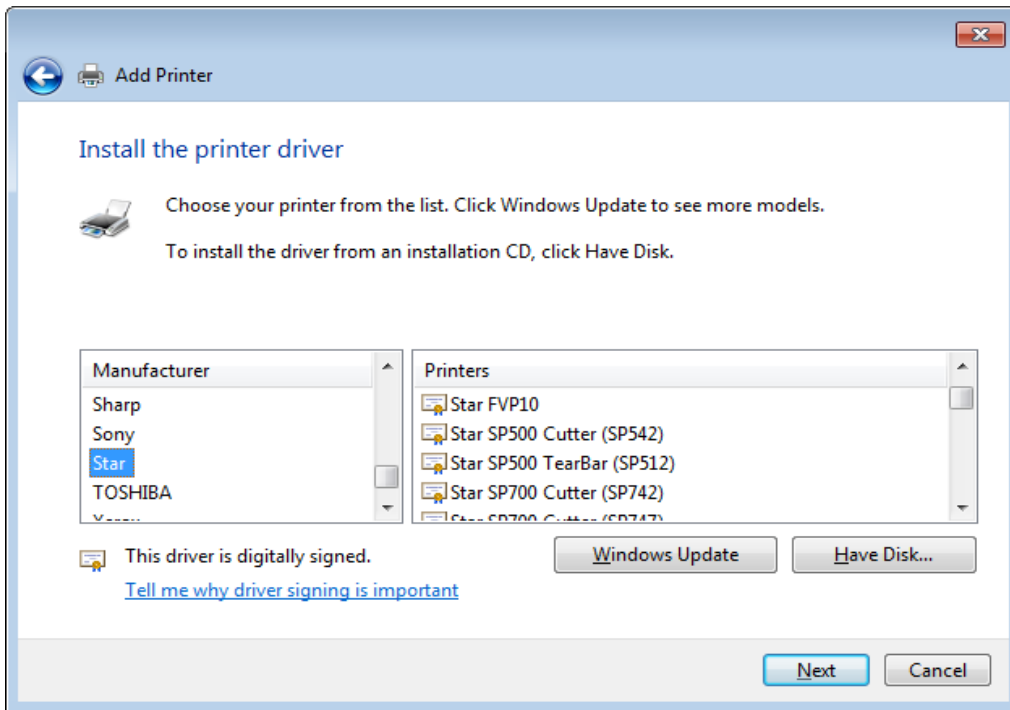
3. Click Create a new port / Standard TCP/IP Port and click Next.



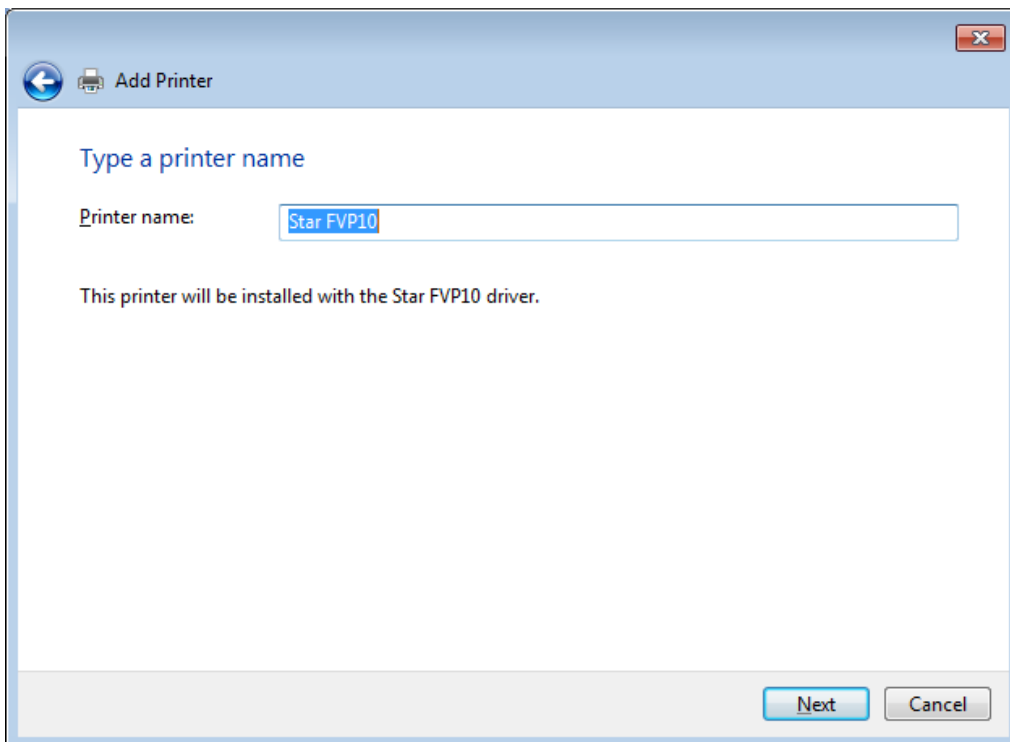
4. Type in the IP address set for the printer in the first field and click Next.



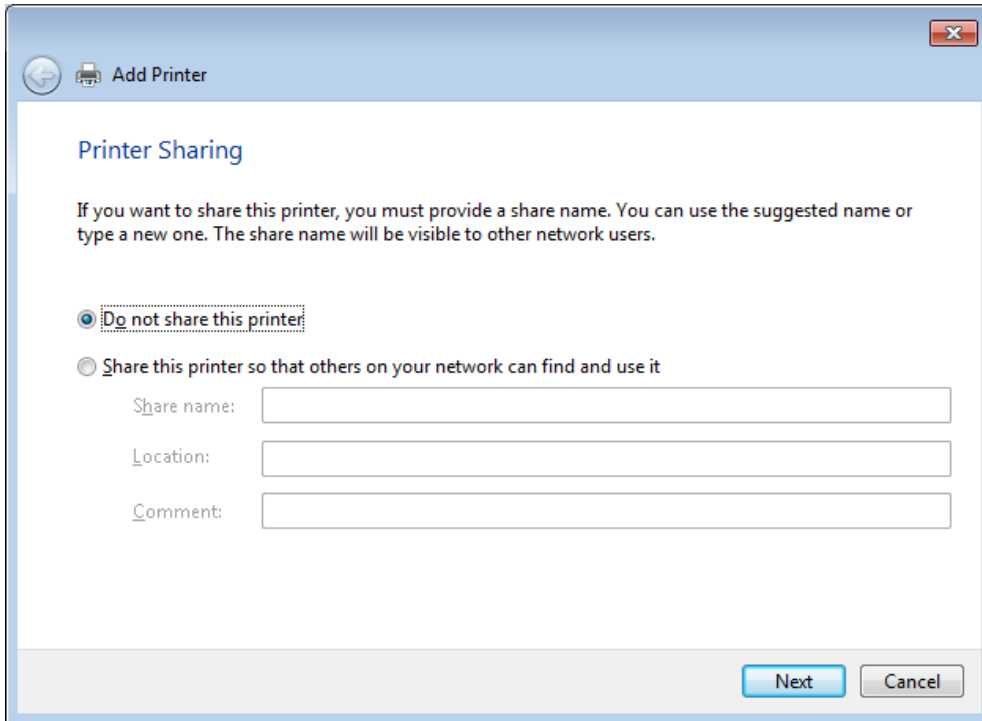
5. Click Generic Network Card and click Next.



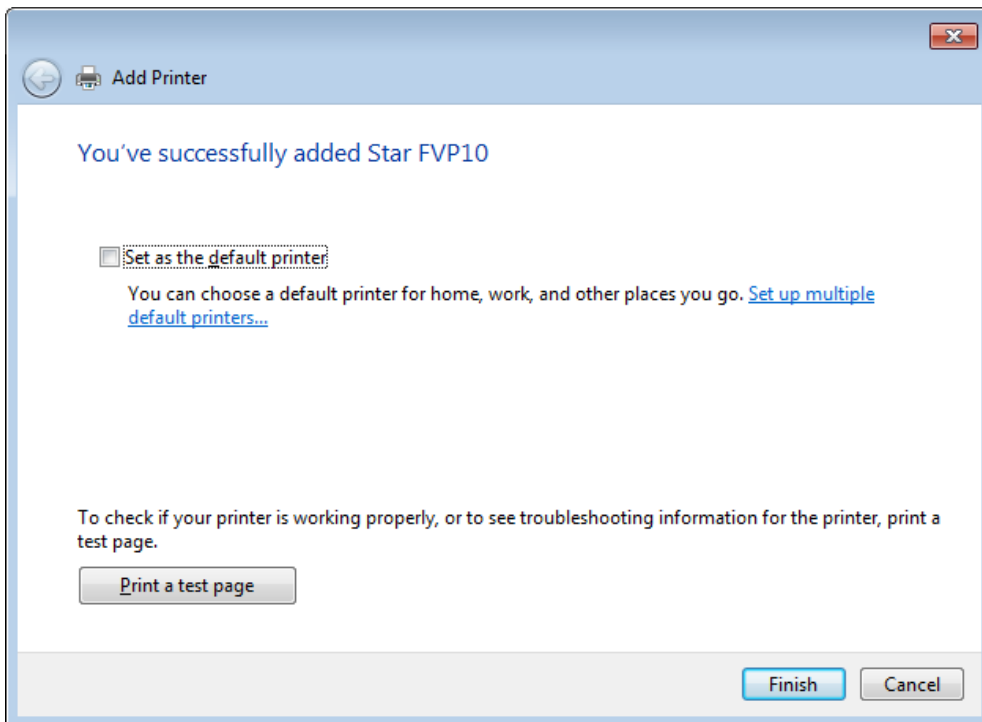
6. If the printer being installed is not listed under Star, click Windows Update to automatically search for it or browse the PC to the driver file by clicking Have Disk.



7. Input the desired printer name and click Next.



8. Select the desired choice and click Next.



9. Set the printer to default if desired and print a test page to ensure communication is established. Then click Finish.

Congratulations! You have successfully assigned an IP address to your Star Micronics ethernet printer.



Star Micronics is a global leader in the manufacturing of small printers. We apply over 50 years of knowhow and innovation to provide elite printing solutions that are rich in stellar reliability and industry-respected features. Offering a diverse line of Thermal, Hybrid, Mobile, Kiosk and Impact Dot Matrix printers, we are obsessed with exceeding the demands of our valued customers every day.

We have a long history of implementations into Retail, Point of Sale, Hospitality, Restaurants and Kitchens, Kiosks and Digital Signage, Gaming and Lottery, ATMs, Ticketing, Labeling, Salons and Spas, Banking and Credit Unions, Medical, Law Enforcement, Payment Processing, and more!

High Quality POS Receipts, Interactive Coupons with Triggers, Logo Printing for Branding, Advanced Drivers for Windows, Mac and Linux, Complete SDK Packages, Android, iOS, Blackberry Printing Support, OPOS, JavaPOS, POS for .NET, Eco-Friendly Paper and Power Savings with Reporting Utility, ENERGY STAR, MSR Reading, *future*PRNT, StarPRNT... How can Star help you fulfill the needs of your application?

Don't just settle on hardware that won't work as hard as you do. Demand everything from your printer. Demand a Star!

### Star Micronics Worldwide

Star Micronics Co., Ltd.  
536 Nanatsushinya  
Shimizu-ku, Shizuoka 424-0066  
Japan  
+81-54-347-2163  
<http://www.star-m.jp/eng/index.htm>

Star Micronics America, Inc.  
1150 King Georges Post Road  
Edison, NJ 08837  
USA  
1-800-782-7636  
+1-732-623-5500  
<http://www.starmicronics.com>

Star Micronics EMEA  
Star House  
Peregrine Business Park, Gomm Road  
High Wycombe, Buckinghamshire HP13 7DL  
UK  
+44-(0)-1494-471111  
<http://www.star-emea.com>

Star Micronics Southeast Asia Co., Ltd.  
Room 2902C. 29th Fl. United Center Bldg.  
323 Silom Road, Silom Bangrak, Bangkok 10500  
Thailand  
+66-2-631-1161 x 2  
<http://www.starmicronics.co.th/>