

Created April 2009

This application note shows how to set up the USB TSP100 for guest check printing from POSERA Maitre'D Software.

Recommended Restaurant Printer Options: Splash Proof Cover, Vertical Stand, Kitchen Alarm

Recommended Star Micronics Utility: futurePRNT (Increase your customer return rate with customized marketing! Included FREE on the TSP100 Installation CD!)

POSERA Maitre'D Software (<http://www.maitred.com/>)

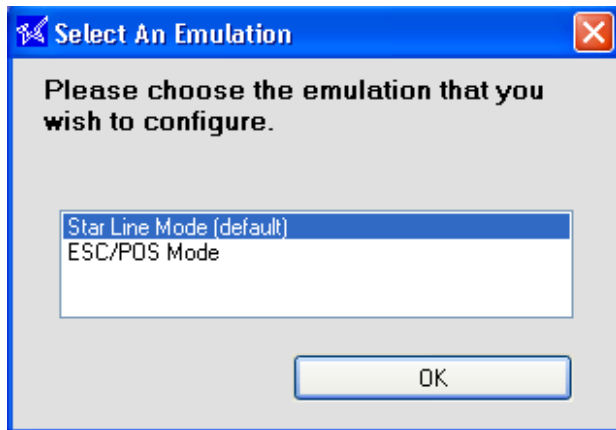
Table of Contents

TSP100 Configuration Page 1
Maitre'D Configuration Page 4

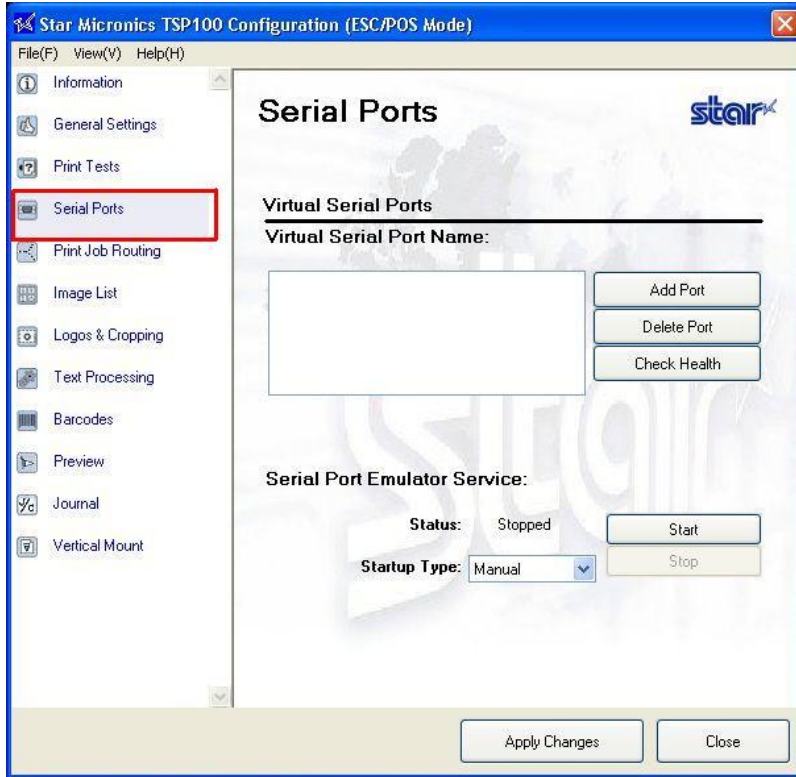
TSP100 Configuration



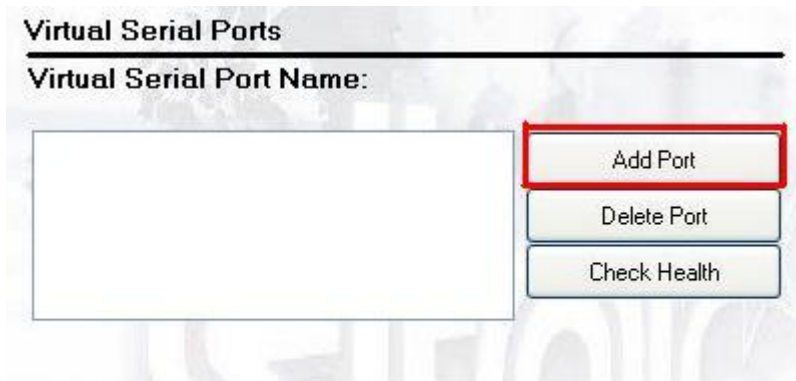
1. Ensure your TSP100 is installed by clicking the Windows Start button and navigating Settings > Printers and Faxes. For instructions on installing Star Micronics printers, visit the FAQ section of <http://www.starmicronics.com/>
2. Click the Windows Start button and navigate Programs > StarMicronics > Star TSP100 > Configuration Utility



3. Highlight "Star Line Mode (default)" and click the "OK" Button.



4. In the left menu bar, click “Serial Ports”.



5. Click the “Add Port” Button.



6. Enter an available COM port and click the “OK” button.



7. Click the “Start” button. Then, click the dropdown box and set the service to “Automatic”.

8. Click on “Apply Changes” in the lower right hand corner.

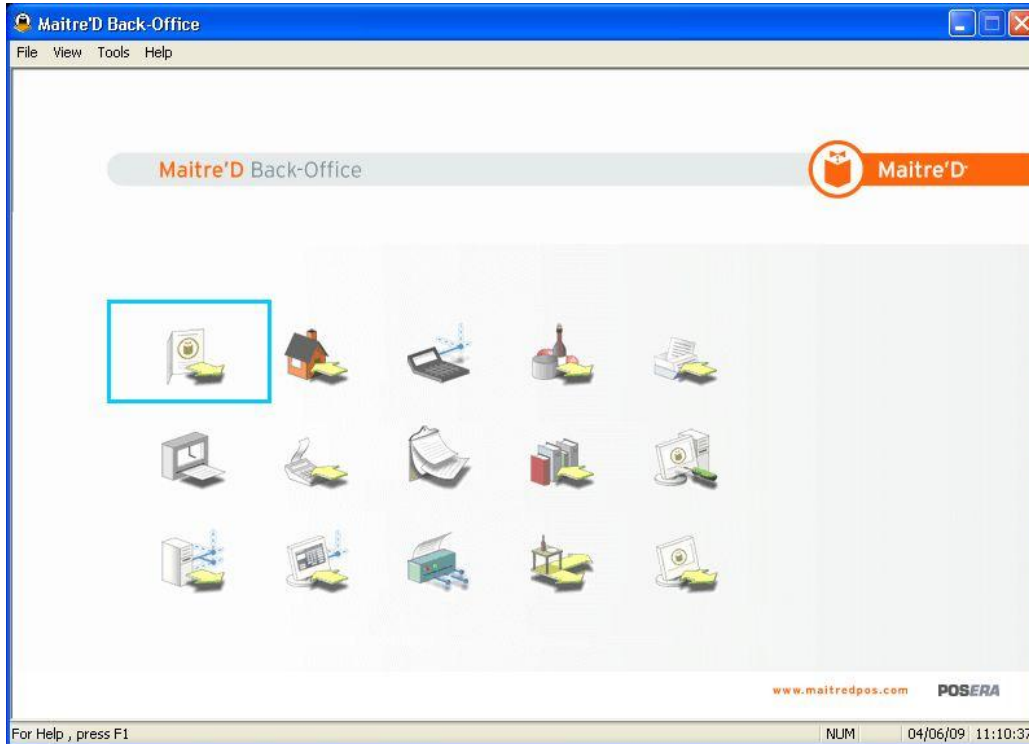


9. Wait five seconds for the service to complete initiating. Then, highlight the COM port and click the “Check Health” button. If successful, a message will display stating “Check Health Completed Successfully”. The printer will also output a short test print. Click “OK” to exit the Check Health window.

10. Click “Close” in the lower right hand corner to exit the Configuration Utility.

Maitre'D Configuration

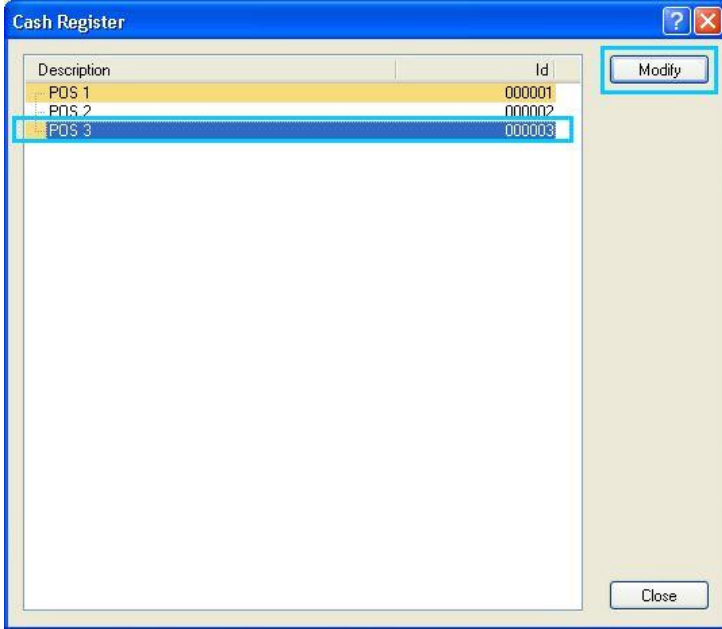
1. Start the Maitre'D server by clicking the Windows Start button and navigating Programs > Startup > Maitre'D POS Server
2. Click the Windows Start button and navigate Programs > Maitre'D Back-Office > Maitre'D Back-Office and log in.



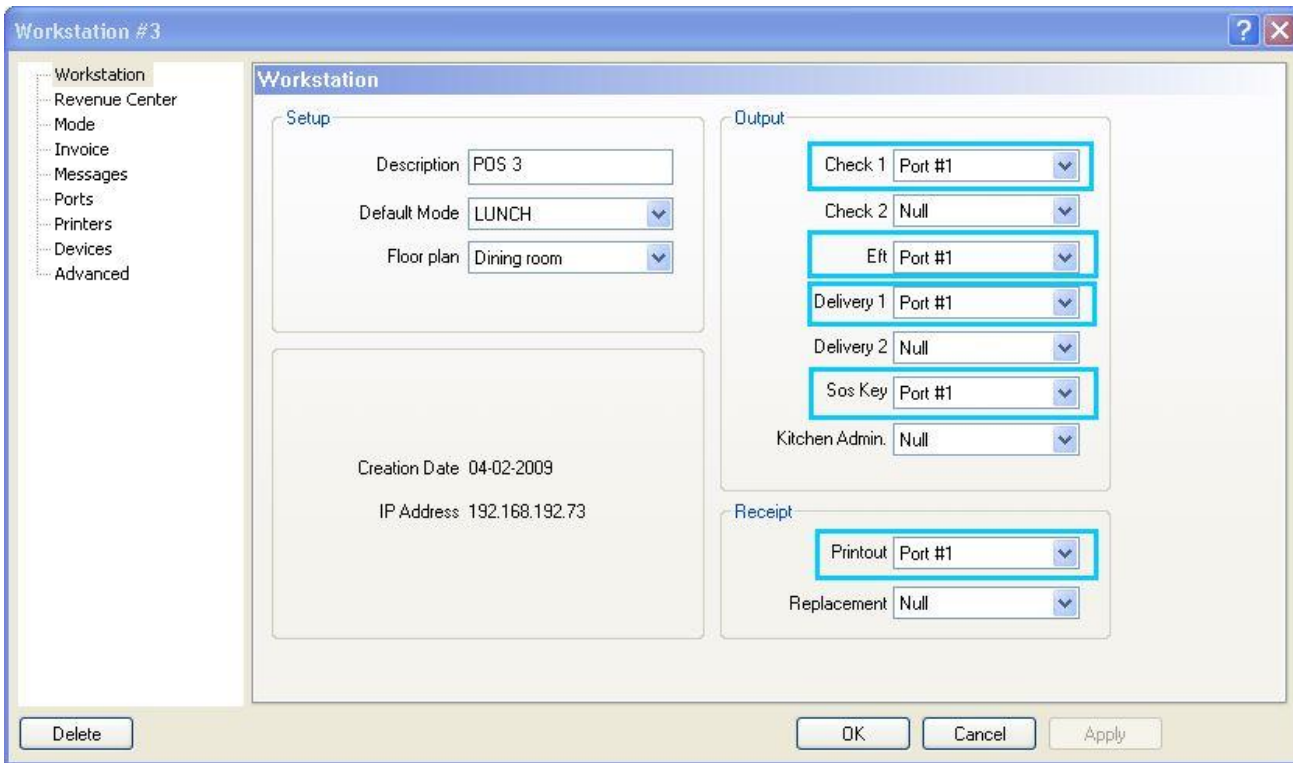
3. Click the icon in the upper left corner to access the Point of Sale Control menu.



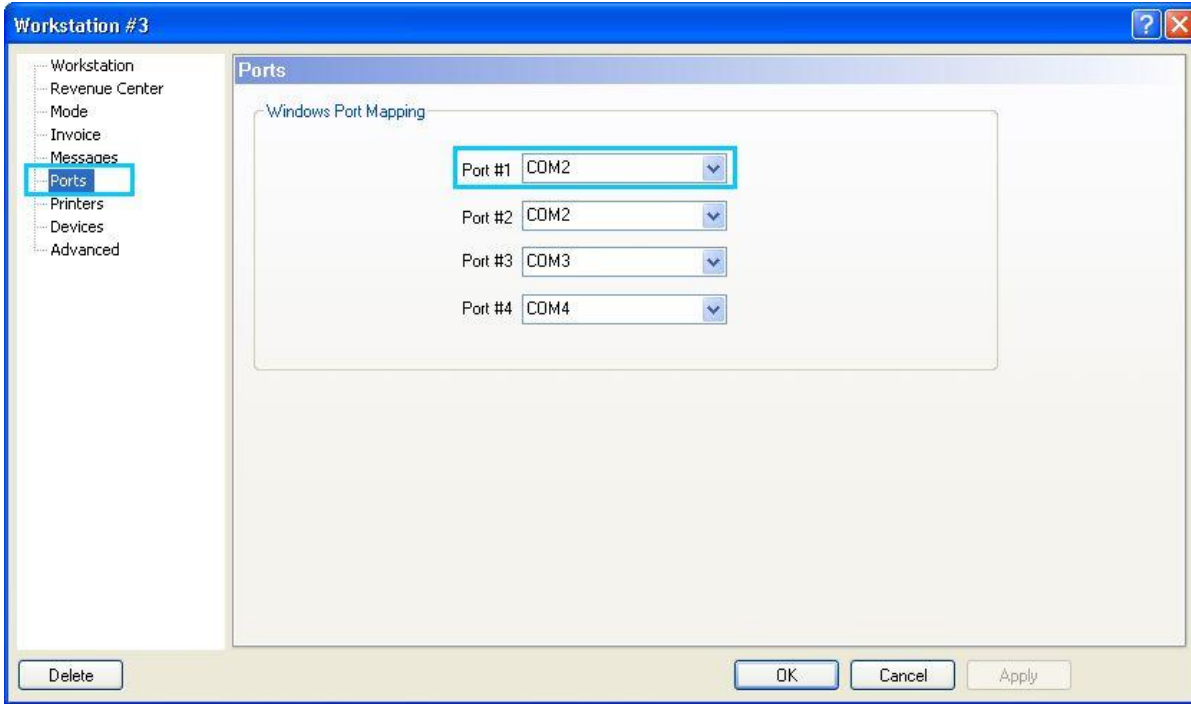
4. In the top menu bar, click "Workstation" and "Options".



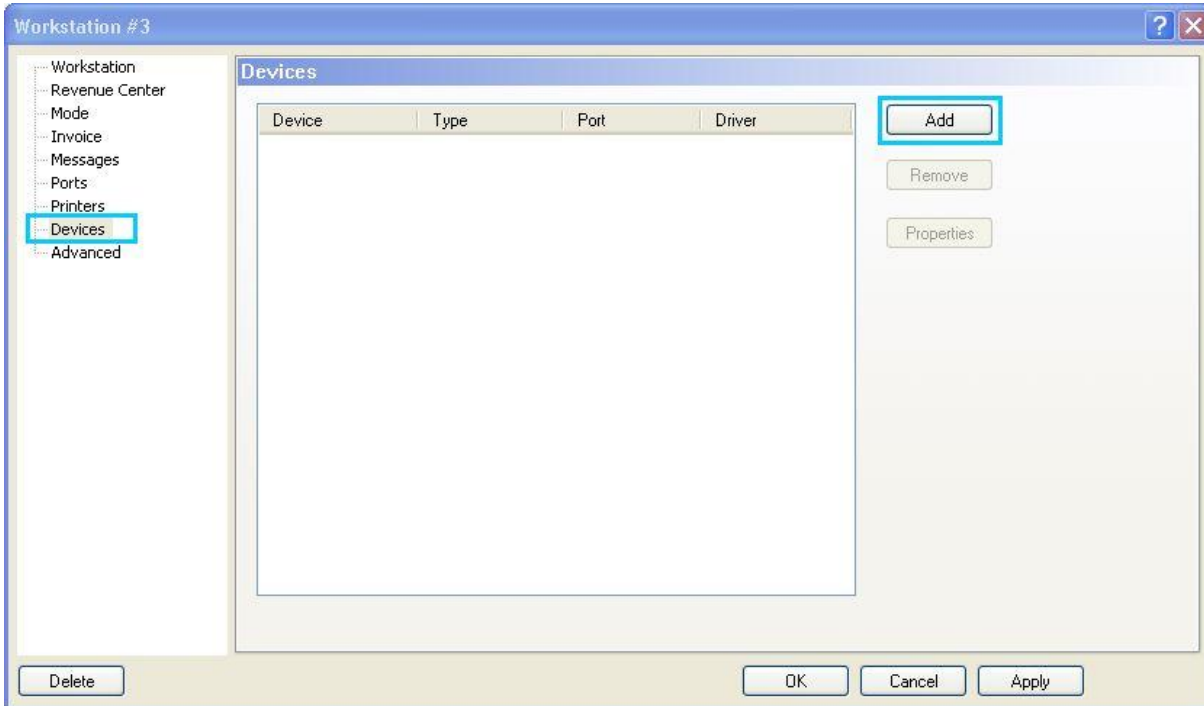
5. Highlight the workstation to be configured and click the “Modify” button.



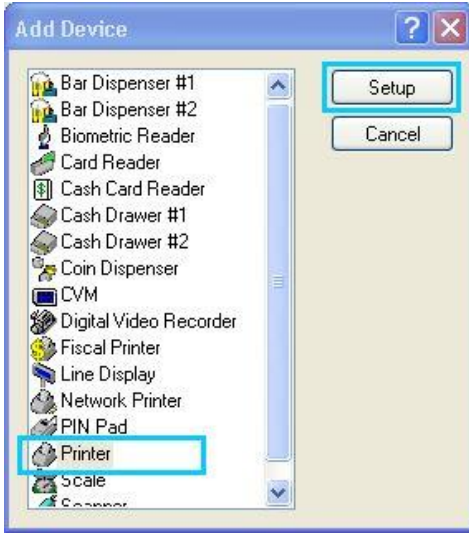
6. Click the drop down fields next to Check1, Eft, Delivery1, Sos Key, and Printout to the “Port #1” setting.



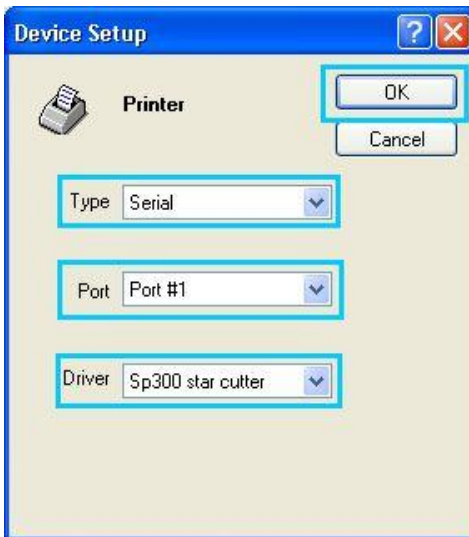
7. Click “Ports” in the left menu bar. Click the drop down box next to Port #1 and set it to the virtual COM port number assigned in the TSP100 Configuration Utility. In this case, it is COM2.



8. Click “Devices” in the left menu bar and then click the “Add” button.



9. Highlight "Printer" and click the "Setup" button.



10. Set type to "Serial". Set Port to "Port #1". Set Driver to "SP300 Star Cutter". Then click the "OK" button.

11. Click the "Apply" button and then the "OK" button in the lower right hand corner.

12. Click the "Close" button in the lower right hand corner.

Congratulations! You have successfully configured your USB TSP100 to print guest checks from Maitre'D!

Easily increase your customer return rate! Did you know you can print coupons on the fly, targeted by what your customers ordered? Visit the Star Micronics' FAQ site at <http://www.starmicronics.com/> to learn about our futurePRNT Utility and its customized marketing tool, included on the Installation CD FREE with every TSP100!