

SCD222U OPOS Driver

- Software Manual -

Table of Contents

1. Getting Started	3
2. Installation.....	4
3. Uninstallation.....	6
4. OPOS device registration	7
5. OPOS functions list	9
6. OPOS Sample Program.....	12
7. Version History.....	13

Notice:

- Windows is registered trademarks of Microsoft Corporation.
- Company and product names are trademarks or registered trademarks of their respective companies.
- The information in this manual is subject to change without notice.
- STAR MICRONICS CO., LTD. has taken every measure to provide accurate information, but assumes no liability for errors or omissions.
- STAR MICRONICS CO., LTD. is not liable for any damages resulting from the use of information contained in this manual.
- Reproduction in whole or in part is prohibited.

1. Getting Started

◆ Operating System

This software supports the following operating systems.

- Windows 10* 32bit and 64bit (except Windows 10 Mobile and Windows 10 IoT)
- Windows 8.1* 32bit and 64bit (except Windows RT 8.1)
- Windows 8* 32bit and 64bit (except Windows RT)
- Windows 7 32bit and 64bit

*** Limitation for Windows 8 / 8.1 / 10**

- Desktop UI only.

◆ Special Notes

1. If the USB port where SCD222U is to be connected is changed after the device is registered, double-click on [Registered Devices] from LineDisplayRegister, and check that it is possible to execute CheckHealth without problem.
2. When SCD222U is connected to the PC, "Connect Supported STAR Printer" appears on the display. This remains displayed until the DeviceEnabled property is set to True from the OPOS application.
3. Multiple SCD222U cannot be controlled from one PC.

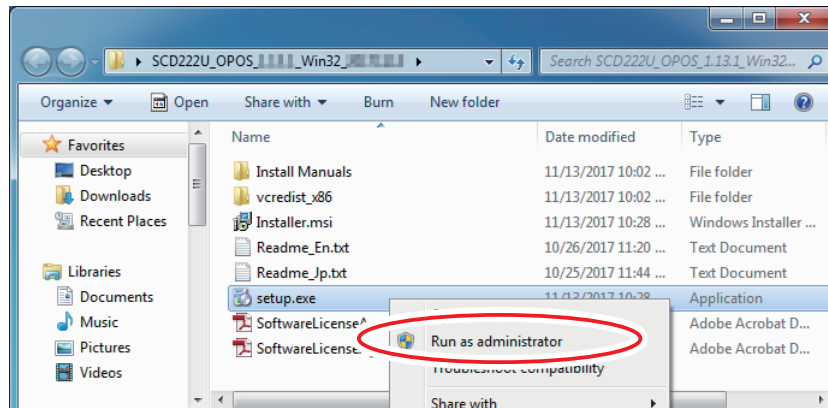
2. Installation

Follow the instructions below to install the software.

Note:

- Connect SCD222U after installation work is completed.
- Administrator privilege is required to run the installation.

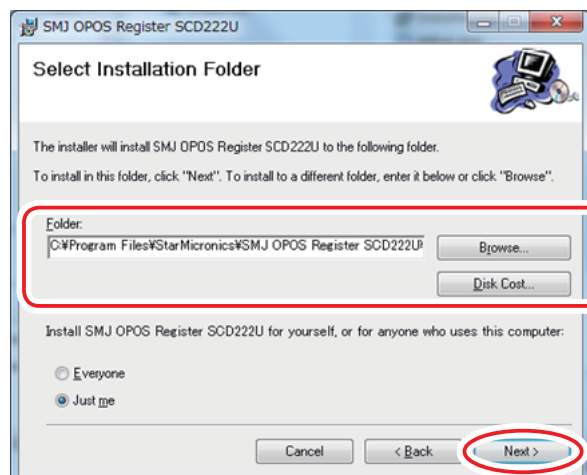
1. Execute "Setup.exe" from this package as an administrator.



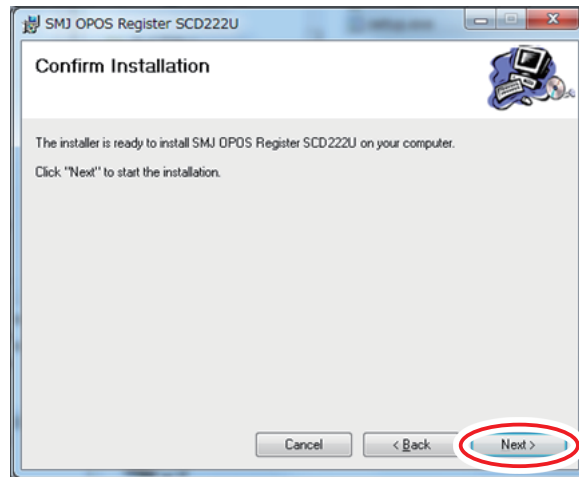
2. Click [Next >].



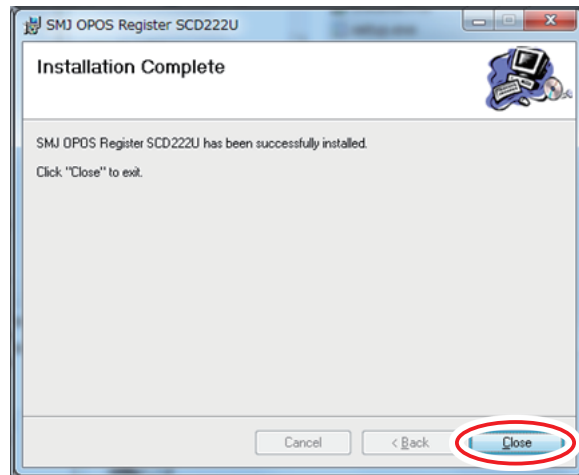
3. Select the installation folder and click [Next >].



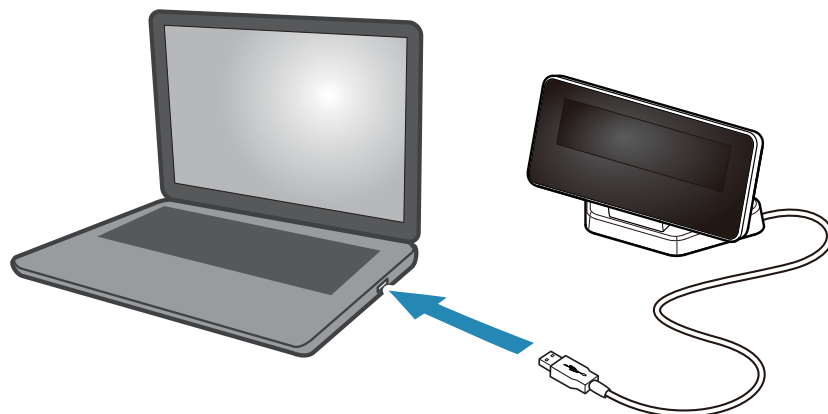
- When click [Next >], start the installation.



- When installation is completed, the following message appears.



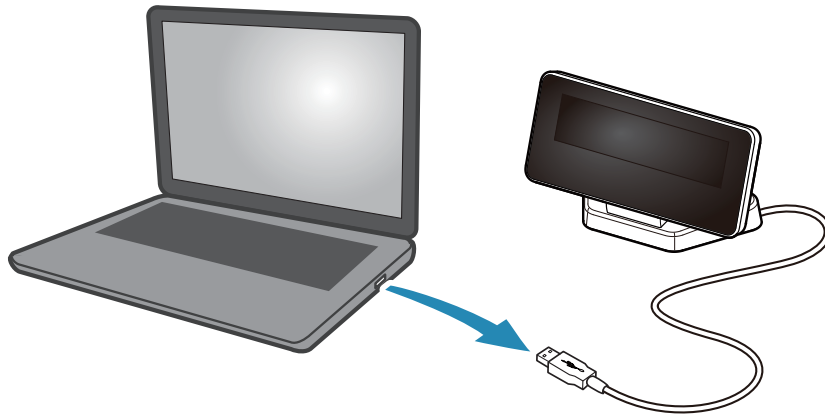
- After installation is completed, connect SCD222U to the USB port on the PC.



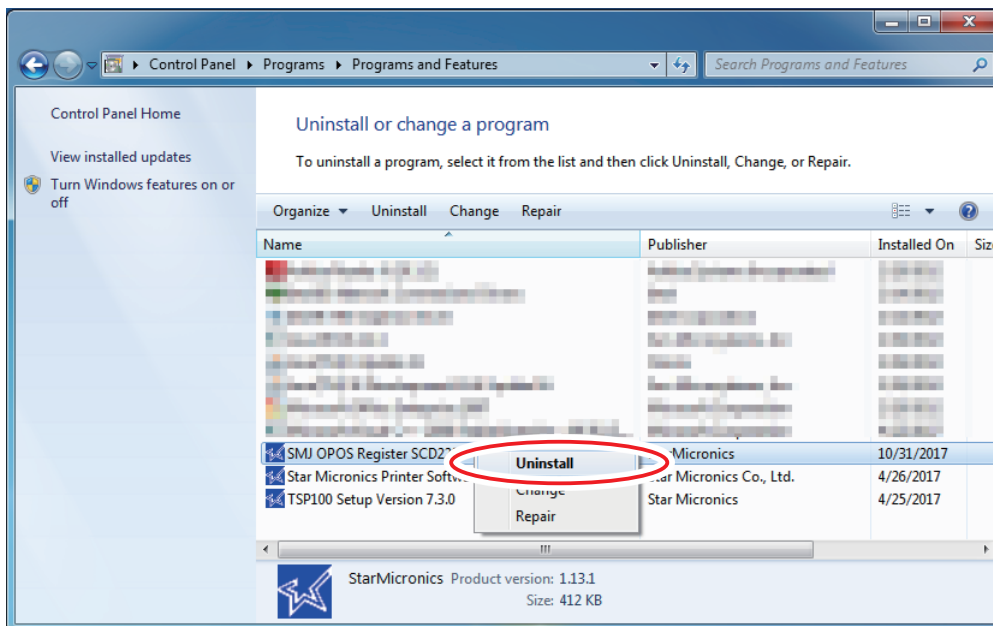
3. Uninstallation

Follow the procedure below to uninstall the SCD222U OPOS Driver.

1. Disconnect the customer display SCD222U from the USB port on the PC.



2. From the Windows Start menu, open [Control Panel] - [Programs and Features]. Right-click on "SMJ OPOS Register SCD222U" and click [Uninstall].

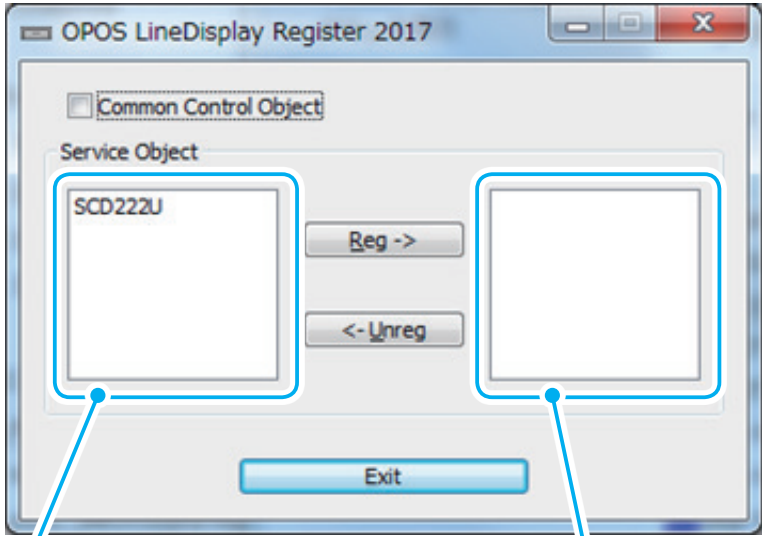


4. OPOS device registration

Use the special utility and register the OPOS device.

- 1. From the Windows Start menu, open [Programs] - [StarMicronics] - [SMJ OPOS Register SCD222U] - [LineDisplayRegister].

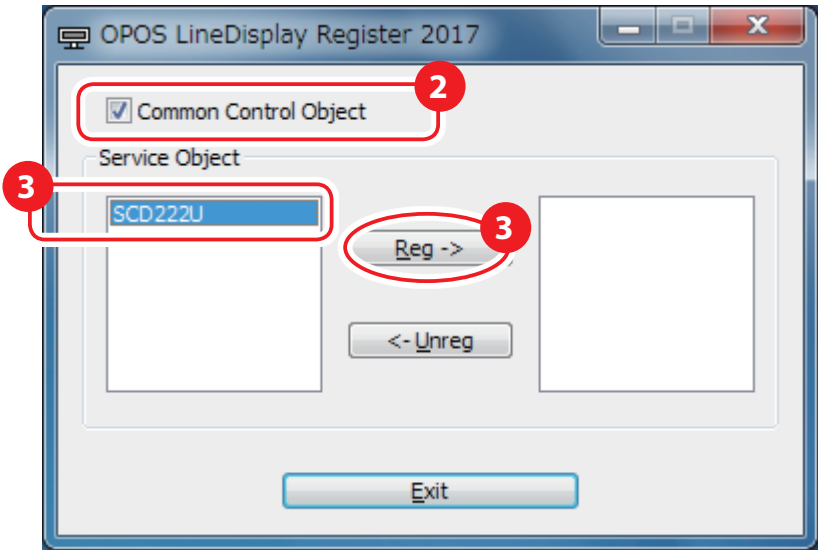
The window shown below appears.



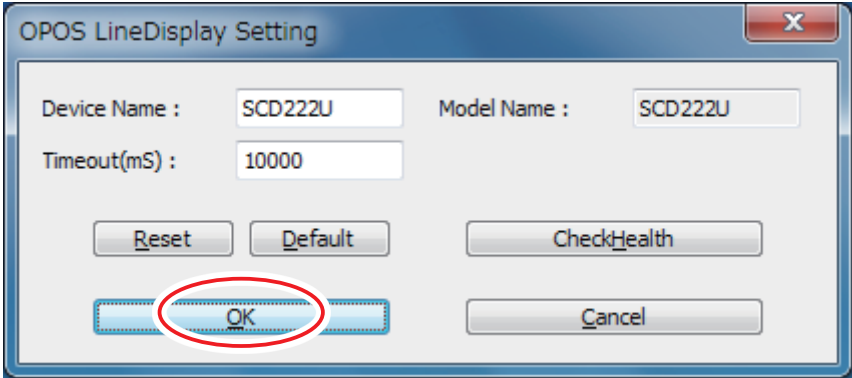
List of connectible Line Displays

List of registered Line Displays

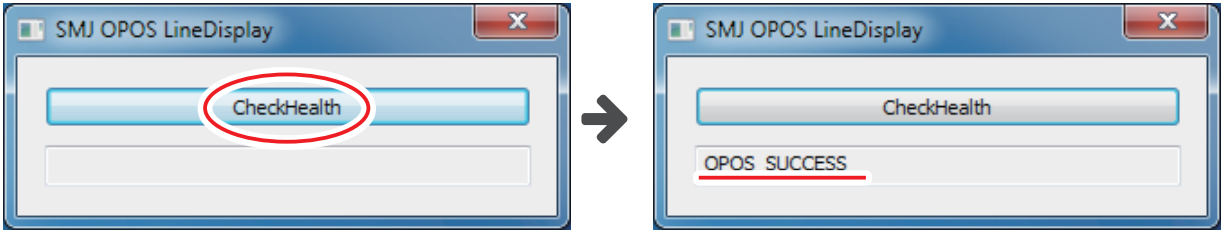
- 2. In order to register a CCO, select the "Common Control Object" check box.
- 3. From the list of connectible Line Displays in the left side of the window, select "SCD222U" and click [Reg >].



4. The window shown below appears.

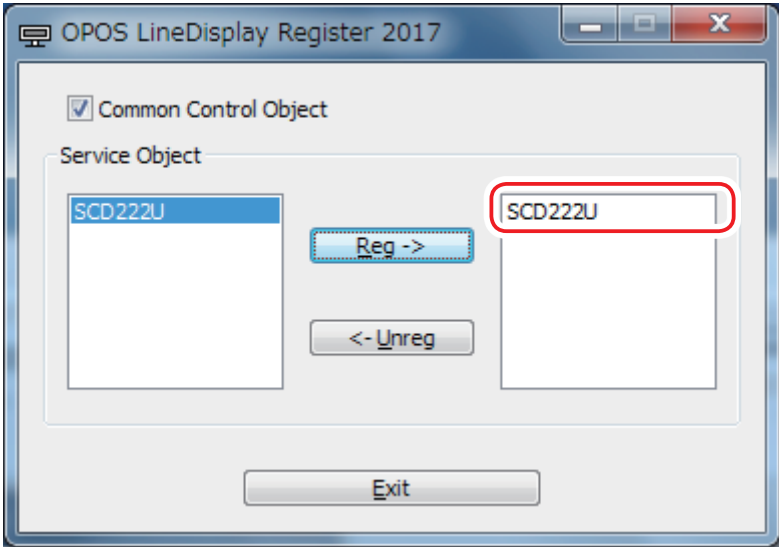


For "Device Name :", enter the name of the device that will be used with OPOS. Click [CheckHealth] to check whether the customer display is connected correctly with the current settings, and whether it operates correctly using the OPOS driver.



After checking, click [OK] to register.

5. When registration is completed, the registered device name appears in the list of registered Line Display on the right side of the window.



5. OPOS functions list

A list of functions that can be configured with SCD222U is shown below.

◆ Properties

Property	Supporting status	Remarks
CheckHealthText	<input type="radio"/>	
Claimed	<input type="radio"/>	
DeviceEnabled	<input type="radio"/>	
FreezeEvents	<input type="radio"/>	
PowerNotify	<input type="radio"/>	
PowerState	<input type="radio"/>	
ResultCode	<input type="radio"/>	
ResultCodeExtended	<input type="radio"/>	
State	<input type="radio"/>	
ControlObjectDescription	<input type="radio"/>	"OPOS LineDisplay Control 1.13.000 [Public, by CRM/RCS-Dayton]"
ControlObjectVersion	<input type="radio"/>	1013000
ServiceObjectDescription	<input type="radio"/>	"SMJ SCD222U OPOS LineDisplay ServiceObject"
ServiceObjectVersion	<input type="radio"/>	1013002
DeviceDescription	<input type="radio"/>	"SMJ SCD222U OPOS LineDisplay"
CapBitmap	<input type="radio"/>	TRUE
CapBlink	<input type="radio"/>	DISP_CB_NOBLINK
CapBlinkRate	<input type="radio"/>	FALSE
CapBrightness	<input type="radio"/>	TRUE
CapCompareFirmwareVersion	<input type="radio"/>	FALSE
CapCharacterSet	<input type="radio"/>	DISP_CCS_KANJI
CapCursorType	<input type="radio"/>	DISP_CCT_UNDERLINE DISP_CCT_BLINK
CapCustomGlyph	<input type="radio"/>	TRUE
CapDescriptors	<input type="radio"/>	FALSE
CapHMarquee	<input type="radio"/>	FALSE
CapICharWait	<input type="radio"/>	FALSE
CapMapCharacterSet	<input type="radio"/>	FALSE
CapPowerReporting	<input type="radio"/>	OPOS_PR_STANDARD
CapReadBack	<input type="radio"/>	DISP_CRB_NONE
CapReverse	<input type="radio"/>	DISP_CR_NONE
CapScreenMode	<input type="radio"/>	FALSE
CapVMarquee	<input type="radio"/>	FALSE
BlinkRate	<input type="radio"/>	0
CharacterSet	<input type="radio"/>	
CharacterSetList	<input type="radio"/>	"437,850,852,860,863,865,866,932,936,949,950,1252"
Columns	<input type="radio"/>	20
CurrentWindows		
CursorColumn		
CursorRow		
CursorType	<input type="radio"/>	
CursorUpdate	<input type="radio"/>	FALSE

Property	Supporting status		Remarks
CustomGlyphList	<input type="radio"/>	20-7F, [A0-DF, 8000-FFFF (CharacterSet 932)]	
DeviceBrightness	<input type="radio"/>		"0 : Backlight OFF 1-100 : Backlight ON"
DeviceColumns	<input type="radio"/>	20	
DeviceDescriptors	<input type="radio"/>	0	
DeviceRows	<input type="radio"/>	2	
DeviceWindows	<input type="radio"/>	0	
GlyphHeight	<input type="radio"/>	16	
GlyphWidth	<input type="radio"/>	8	
InterCharacterWait			
MapCharacterSet	<input type="radio"/>	FALSE	
MarqueeFormat			
MarqueeRepeatWait			
MarqueeType			
MarqueeUnitWait			
MaximumX	<input type="radio"/>	160	
MaximumY	<input type="radio"/>	40	
Rows	<input type="radio"/>	2	
ScreenMode	<input type="radio"/>	0	
ScreenModeList	<input type="radio"/>	"2x20"	

◆ Methods

Method	Supporting status	Remarks
Open	<input type="radio"/>	
Close	<input type="radio"/>	
ClaimDevice	<input type="radio"/>	
ReleaseDevice	<input type="radio"/>	
CheckHealth	<input type="radio"/>	
CompareFirmwareVersion		
DirectIO		
ClearDescriptors		
ClearText	<input type="radio"/>	
CreateWindows		
DefineGlyph	<input type="radio"/>	
DestroyWindow		
DisplayBitmap	<input type="radio"/>	"The following values cannot be specified for AlignmentX and AlignmentY. DISP_BM_LEFT DISP_BM_CENTER DISP_BM_RIGHT"
DisplayText	<input type="radio"/>	Attribute supports DISP_DT_NORMAL only.
DisplayTextat	<input type="radio"/>	Attribute supports DISP_DT_NORMAL only.
ReadCharacterAtCursor		
RefreshWindows		
ScrollText		
SetBitmap	<input type="radio"/>	"The following values cannot be specified for AlignmentX and AlignmentY. DISP_BM_LEFT DISP_BM_CENTER DISP_BM_RIGHT"
SetDescriptor		

◆ Events

Event	Supporting status	Remarks
StatusUpdateEvent	<input type="radio"/>	

6. OPOS Sample Program

After installing, the VB6 project is saved in the following folder.

64-bit version

Program Files (x86)\StarMicronics\SMJ OPOS Register SCD222U\LineDisplaySample

32-bit version

Program Files\StarMicronics\SMJ OPOS Register SCD222U\LineDisplaySample

This sample program can be used to test OPOS operation.



URL: <http://www.starmicronics.com/support/>